



HANSON RIVET

& SUPPLY CO.

13241 Weidner Street
Pacoima, CA 91331

Phone: 818-485-0500

FAX: 818-485-0540

Outside CA: 1-800-RRRIVET

www.hansonrivet.com

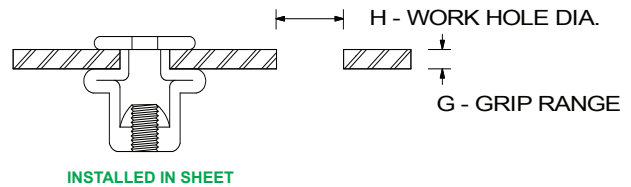
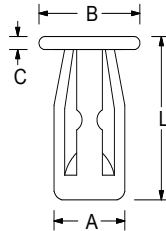


JACK-NUT® THREADED INSERTS



JACK-NUTS® are an economical Threaded Insert designed for use in thin, soft or brittle materials.

During installation the body collapses on the back side to form legs which grip the inside of the mounting surface.



- Fastens in blind holes
- Won't distort soft plastics
- Not hole diameter sensitive
- Can be installed in uneven materials
- One-step installation with manual or pneumatic tools

THREAD SIZE	PART NUMBER	POP®	BODY DIAMETER "A"	WORK HOLE DIAMETER "H"	GRIP RANGE "G"	LENGTH OVER ALL "L"	HEAD DIAMETER "B"	HEAD HEIGHT "C"	TEST RESULTS (See Note)			
									TEST PLATE HOLE DIA.	TEST PLATE THICKNESS	ULTIMATE TORQUE (in.-lbs.)	ULTIMATE TENSILE (lbs.)
6-32	RJN-06-187	4SJN	.318	.318/.330	.015-.187	.653	.468	.073	.328	.187	18	433
	RJN-06-375	4LJN	.318	.318/.330	.188-.375	.841	.468	.073	.328	.375	18	386
10-24	RJN-10-187	6SJN	.382	.382/.400	.015-.187	.716	.531	.073	.390	.187	31	640
	RJN-10-375	6LJN	.382	.382/.400	.188-.375	.888	.531	.073	.390	.375	31	554
1/4-20	RJN-25-187	8SJN	.438	.438/.450	.015-.187	.731	.625	.073	.438	.187	41	820
	RJN-25-375	8LJN	.438	.438/.450	.188-.375	.919	.625	.073	.438	.375	41	806
	RJN-25-500	8XLJN	.438	.438/.450	.376-.500	1.094	.625	.073	.438	.500	41	855

Standard material: STEEL ZINC FINISH (BRASS is available as a special order and may be subject to a minimum order quantity)

NOTE: Values for tightening torques and ultimate tensile strengths are a guide only and may vary greatly upon the application.

JACK-NUT® INSTALLATION TOOLS

JNT 1100 FRICTION WRENCH



For use when installing a limited quantity of Jack-Nuts®. Place the wrench between screw and head of insert, hold wrench and run in screw to set Jack-Nut®.

JNT 2200 LIGHT DUTY HAND TOOL



An economical tool for low volume installation of 6-32, 10-24 or 1/4-20 Jack-Nuts®. Thread Jack-Nut® on to the mandrel, insert into hole and squeeze handles to set. Mandrels & Tool sold separately.

JNT 2400 HEAVY DUTY HAND TOOL



Heavy Duty Tool with Quick Thread Mandrel for installation of 6-32, 10-24 or 1/4-20 Jack-Nuts®. Thread Jack-Nut® on to the mandrel, insert into hole and squeeze handles to set. Mandrels & Tool sold separately.

JNT 7529 & JNT 7530 SPIN-SPIN AIR TOOL



For high volume setting of Jack-Nuts®. These torque adjustable tools set the insert by rotation, automatically compensating for material thickness variations. Reverses for removal. Tool comes set-up for one size. JNT 7529: 750 rpm., 50in.-lbs. torque. JNT 7530: 2300 rpm., 15in.-lbs. torque.