



HANSON RIVET

& SUPPLY CO.
13241 Weidner Street
Pacoima, CA 91331

See page D56 for
Collars & installation tools

Phone: 818-485-0500
FAX: 818-485-0540

Outside CA: 1-800-RRRIVET
www.hansonrivet.com



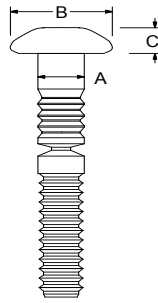
AVDELOK® LOCKBOLTS



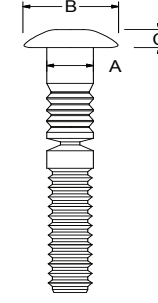
ALUMINUM
POLISHED



BRAZIER HEAD



TRUSS HEAD



BODY DIAMETER "A"	WORK HOLE DIAMETER "H"	GRIP RANGE "G"	BRAZIER HEAD			TRUSS HEAD			TYPICAL ULTIMATE STRENGTHS IN LBS. (SEE NOTE)	
			HEAD SIZE	PART NUMBER	Avdel®	HEAD SIZE	PART NUMBER	Avdel®	SHEAR	TENSILE
			DIAMETER (NOM.) "B"	HEIGHT (MAX.) "C"		DIAMETER (NOM.) "B"	HEIGHT (MAX.) "C"			
3/16 .191/.195	.203	.063-.188	.375	.125	LB-2801-0602	2801-0602	.437	.088	1050	1060
		.125-.250			LB-2801-0603	2801-0603				
		.187-.312			LB-2801-0604	2801-0604				
		.250-.375			LB-2801-0605	2801-0605				
		.312-.437			LB-2801-0606	2801-0606				
		.375-.500			LB-2801-0607	2801-0607				
		.437-.562			LB-2801-0608	2801-0608				
		.500-.625			LB-2801-0609	2801-0609				
		.562-.687			LB-2801-0610	2801-0610				
		.625-.750			LB-2801-0611	2801-0611				
		.687-.812			LB-2801-0612	2801-0612				
		.750-.875			LB-2801-0613	2801-0613				
.812-.937	LB-2801-0614	2801-0614								
.875-1.000	LB-2801-0615	2801-0615								
.937-1.062	LB-2801-0616	2801-0616								
1.000-1.125	LB-2801-0617	2801-0617								
1.062-1.187	LB-2801-0618	2801-0618								
1.125-1.250	LB-2801-0619	2801-0619								
1.187-1.312	LB-2801-0620	2801-0620								
1/4 .254/.259	.266	.063-.188	.509	.152	LB-2801-0802	2801-0802	.562	.115	1875	1780
		.125-.250			LB-2801-0803	2801-0803				
		.187-.312			LB-2801-0804	2801-0804				
		.250-.375			LB-2801-0805	2801-0805				
		.312-.437			LB-2801-0806	2801-0806				
		.375-.500			LB-2801-0807	2801-0807				
		.437-.562			LB-2801-0808	2801-0808				
		.500-.625			LB-2801-0809	2801-0809				
		.562-.687			LB-2801-0810	2801-0810				
		.625-.750			LB-2801-0811	2801-0811				
		.687-.812			LB-2801-0812	2801-0812				
		.750-.875			LB-2801-0813	2801-0813				
.812-.937	LB-2801-0814	2801-0814								
.875-1.000	LB-2801-0815	2801-0815								
.937-1.062	LB-2801-0816	2801-0816								
1.062-1.187	LB-2801-0818	2801-0818								
1.187-1.312	LB-2801-0820	2801-0820								
5/16 .317/.322	.328	.125-.375	.625	.201	LB-2801-1004	2801-1004	.750	.157	2925	2850
		.250-.500			LB-2801-1006	2801-1006				
		.375-.625			LB-2801-1008	2801-1008				
		.500-.750			LB-2801-1010	2801-1010				
		.625-.875			LB-2801-1012	2801-1012				
		.750-1.000			LB-2801-1014	2801-1014				
		.875-1.125			LB-2801-1016	2801-1016				
		1.000-1.250			LB-2801-1018	2801-1018				
		1.125-1.375			LB-2801-1020	2801-1020				
		1.250-1.500			LB-2801-1022	2801-1022				
		1.375-1.625			LB-2801-1024	2801-1024				
		1.500-1.750			LB-2801-1026	2801-1026				
1.625-1.875	LB-2801-1028	2801-1028								
1.750-2.000	LB-2801-1030	2801-1030								
1.875-2.125	LB-2801-1032	2801-1032								
3/8 .380/.385	.391	.125-.375	.750	.248	LB-2801-1204	2801-1204	.875	.168	4200	4200
		.250-.500			LB-2801-1206	2801-1206				
		.375-.625			LB-2801-1208	2801-1208				
		.500-.750			LB-2801-1210	2801-1210				
		.625-.875			LB-2801-1212	2801-1212				
		.750-1.000			LB-2801-1214	2801-1214				
		.875-1.125			LB-2801-1216	2801-1216				
		1.000-1.250			LB-2801-1218	2801-1218				
		1.125-1.375			LB-2801-1220	2801-1220				
		1.250-1.500			LB-2801-1222	2801-1222				
		1.375-1.625			LB-2801-1224	2801-1224				
		1.500-1.750			LB-2801-1226	2801-1226				
1.625-1.875	LB-2801-1228	2801-1228								
1.750-2.000	LB-2801-1230	2801-1230								
1.875-2.125	LB-2801-1232	2801-1232								

NOTE: Values for typical ultimate strengths are a guide only and may vary greatly depending upon the application.