



HANSON RIVET & SUPPLY CO.

13241 Weidner Street
Pacoima, CA 91331

Phone: 818-485-0500

FAX: 818-485-0540

Outside CA: 1-800-RRRIVET

www.hansonrivet.com



MAXLOK® LOCKBOLTS & COLLARS



AVDEL MAXLOK® Lockbolt system is a two piece fastener consisting of a Lockbolt and Collar. The Lockbolt is placed through the work and the Collar is placed over the end of the Lockbolt. Using the proper tool the two are swagged together and the Lockbolt is broken off flush with the collar. This fastener has a very wide grip range and exceptional clamp-up force, shear and tensile strengths.



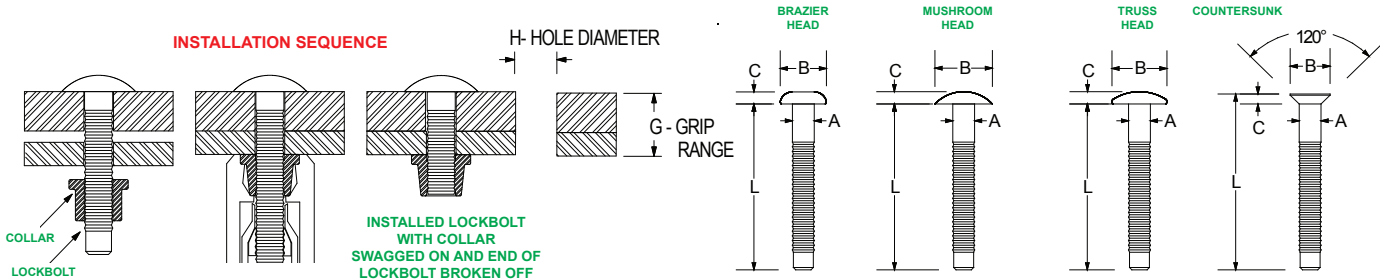
NG4 AIR-HYDRAULIC TOOL
Capacity: 3/16" & 1/4" diameter Maxlok® Lockbolts
Weight: 5.2 lbs. - Pulling Force: 4,200 lbs. - Stroke: .670"
Please specify size of Lockbolt when ordering.



GB722 AIR-HYDRAULIC TOOL
Capacity: Standard Blind Rivets up to 1/4" diameter
Lockbolts up to 3/16" & Multi-Grip Lockbolts up to 1/4" diameter In all materials
Weight: 5.50 lbs. - Pulling Force: 4,700 lbs.
Stroke: .590" Nose Assembly Not Included



GBP722TCKL
Blind Rivet and Lockbolt Kit
For more details please visit our website www.hansonrivet.com

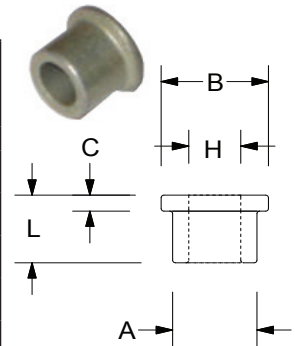


LOCKBOLTS

MATERIAL & FINISH	NOMINAL BODY DIAMETER	HEAD STYLE	PART NUMBER	Avdel®	BODY DIAMETER "A"	WORK HOLE DIAMETER "H"	GRIP RANGE "G"	BODY LENGTH "L"	HEAD DIAMETER (NOM.) "B"	HEAD HEIGHT "C"	TYPICAL ULTIMATE STRENGTHS IN LBS. (SEE NOTE)	
											SHEAR	TENSILE
STEEL ZINC FINISH	3/16	BRAZIER	LB-1901-0610 LB-1601-0620	1901-0610 1601-0620	.183/.186	.203	.062-.625 .312-1.250	1.875-1.900 2.500-2.525	.394	.120-.133	1855	2250
		MUSHROOM	LB-1903-0610 LB-1903-0620	1903-0610 1903-0620	.183/.186	.203	.062-.625 .312-1.250	1.875-1.900 2.500-2.525	.490	.100-.110	1855	2250
		TRUSS	LB-1905-0610 LB-1905-0620	1905-0610 1905-0620	.183/.186	.203	.062-.625 .312-1.250	1.875-1.900 2.500-2.525	.469	.100-.110	1855	2250
		120° CTSK.	LB-1902-0610 LB-1902-0620	1902-0610 1902-0620	.183/.186	.203	.096-.625 .302-1.250	.955-1.980 2.580-2.565	.339	.085 (NOM.)	1855	2250
	1/4	BRAZIER	LB-1901-0810 LB-1901-0820	1901-0810 1901-0820	.252/.257	.265	.062-.625 .312-1.250	2.065-2.095 2.690-2.720	.525	.145-.162	2650	3600
		MUSHROOM	LB-1903-0810 LB-1903-0820	1903-0810 1903-0820	.252/.257	.265	.062-.625 .312-1.250	2.065-2.095 2.690-2.720	.656	.115-.125	2650	3600
		TRUSS	LB-1905-0810 LB-1905-0820	1905-0810 1905-0820	.252/.257	.265	.062-.625 .312-1.250	2.065-2.095 2.690-2.720	.594	.100-.120	2650	3600
		BRAZIER	LB-1921-0610 LB-1921-0620	1921-0610 1921-0620	.183/.186	.203	.062-.625 .312-1.250	1.875-1.900 2.500-2.525	.394	.120-.133	950	1300
ALUMINUM POLISHED FINISH	3/16	BRAZIER	LB-1921-0610 LB-1921-0620	1921-0610 1921-0620	.183/.186	.203	.062-.625 .312-1.250	1.875-1.900 2.500-2.525	.394	.120-.133	950	1300
	1/4	BRAZIER	LB-1921-0810 LB-1921-0820	1921-0810 1921-0820	.252/.257	.265	.062-.625 .312-1.250	2.065-2.095 2.690-2.720	.525	.145-.162	1675	2200

COLLARS

MATERIAL & FINISH	CORRESPONDING MAXLOK® LOCKBOLT BODY DIAMETER	FLANGE STYLE	PART NUMBER	Avdel®	BODY DIAMETER "A"	FLANGE DIAMETER "B"	FLANGE HEIGHT "C"	HOLE DIAMETER "H"	OVERALL LENGTH "L"
LARGE	LB-1991-0600	1991-0600	.306/.309	.640/.765	.090-.115	.191-.195	.340-.380		
ALUMINUM PLAIN FINISH	3/16	SMALL	LB-1985-0600	1985-0600	.306/.309	.375/.390	.057-.067	.191-.195	.254-.264
		SMALL	LB-1985-0800	1985-0800	.403/.406	.490/.510	.072-.082	.254-.258	.368-.378
	1/4	SMALL	LB-1985-0600	1985-0600	.306/.309	.375/.390	.057-.067	.191-.195	.254-.264



NOTE: Values for typical ultimate strengths are a guide only and may vary greatly depending upon the application.