



# HANSON RIVET

& SUPPLY CO.

13241 Weidner Street  
Pacoima, CA 91331

Phone: 818-485-0500

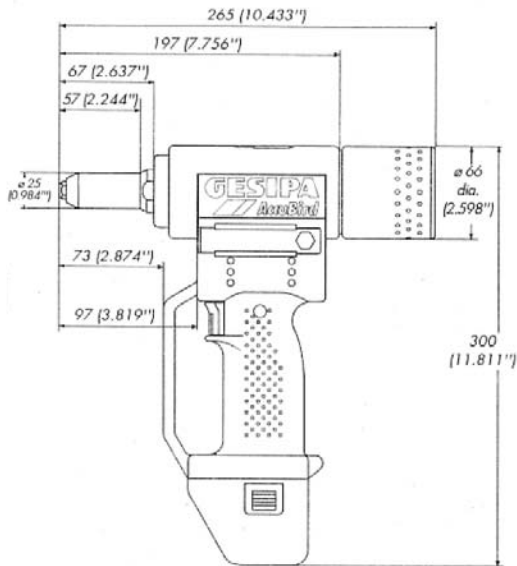
FAX: 818-485-0540

Outside CA: 1-800-RRRIVET

www.hansonrivet.com



## ACCUBIRD CORDLESS BLIND RIVET TOOLS



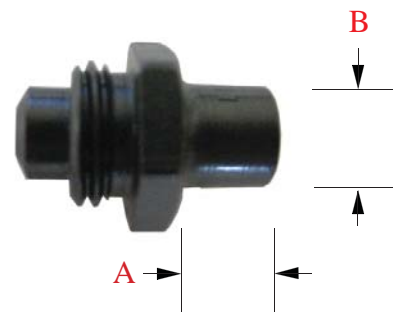
### ACCUBIRD

Capacity: up to 3/16" diameter:  
Stainless standard open end blind rivets  
Weight: 4 lbs. - Pulling Force: 1,000 lbs.  
Stroke: .790"  
Nose Pieces Included: 3/32, 1/8, 5/32, 3/16  
Battery life: 400 to 1,900 rivets  
Complete with carrying case battery & charger.



### TOOL CAPACITY

RIVET MATERIAL		RIVET DIAMETERS			
		STANDARD COMMERCIAL OPEN-END RIVETS			
BODY	MANDREL	3/32	1/8	5/32	3/16
ALUMINUM	ALUMINUM	●	●	●	●
ALUMINUM	STEEL	●	●	●	●
STEEL	STEEL	●	●	●	●
STAINLESS	STEEL	●	●	●	●
STAINLESS	STAINLESS	●	●	●	●



### APPROXIMATE RIVETS PER CHARGE

RIVET BODY DIAMETER	MATERIAL	RIVETS/CHARGE
3/32	ALUMINUM	1,900
1/8	ALUMINUM	1,300
1/8	STEEL	1,100
1/8	STAINLESS	1,000
5/32	ALUMINUM	1,000
5/32	STEEL	900
5/32	STAINLESS	800
3/16	ALUMINUM	700
3/16	STEEL	500
3/16	STAINLESS	400

### SPECIAL LONG NOSEPIECES \*

RIVET DIAMETER	PART NUMBER	"A" SHANK LENGTH	"B" SHANK DIA.
3/32"	RTP-7252121	.315	.236
1/8"	RTP-7252148	.315	.236
5/32"	RTP-7252156	.315	.314
3/16"	RTP-7252172	.315	.393

\*Long nosepieces may require special long mandrels

### STANDARD NOSEPIECES

TYPE OF RIVET	RIVET DIAMETER	NOSEPIECE
OPEN-END RIVET	3/32	RTP-7252075
	1/8	RTP-7251583
	5/32	RTP-7252040
	3/16	RTP-7252067

### REPLACEMENT JAWS

RTP-7102208

## REPLACEMENT BATTERIES & CHARGERS

Battery Part Number	Battery Specification	Charger Part number	Charger Specification
RTP-7251017	12V 1.4AH Ni-Cd	RTP-7251036	12V Ni-Cd + Ni-MH
RTP-7251092	12V 1.7AH Ni-Cd	RTP-7251036	12V Ni-Cd + Ni-MH
RTP-7251095	12V 2.0AH Ni-Cd	RTP-7251036	12V Ni-Cd + Ni-MH
RTP-7251030	12V 3.2AH Ni-MH	RTP-7251036	12V Ni-Cd + Ni-MH
RTP-7251045	14.4V 1.3AH Li-Ion	RTP-7251138	14.4V Li-Ion
RTP-7251049	14.4V 2.6AH Li-Ion	RTP-7251138	14.4V Li-Ion

### Batteries

Due to European environmental regulations, we will no longer be supplying 12V Nickel-Cadmium (Ni-Cd) batteries. Once existing inventories are gone, they will not be available for sale or replacement. The 12V 3.2AH Nickel-Metal Hydride (Ni-MH) battery will still be available for sale. In addition to this change, a new product line of 14.4V Lithium Ion (Li-Ion) batteries will be available for sale. The new 14.4V Li-Ion batteries will be available in 2 sizes: 1.3AH and 2.6AH. All Li-Ion batteries will require 14.4V Li-Ion chargers.

### Chargers

As a result of the change to the batteries, a new 14.4V Lithium Ion (Li-Ion) charger will be available for sale. Also, the Ni-Cd + Ni-MH charger will remain available for sale.

### Battery Powered Tools

Once existing inventories of standard Accubirds, Powerbirds and Firebirds are gone, they will no longer come with Nickel-Cadmium batteries. All new inventories of standard Accubirds, Powerbirds Firebirds will come with 14.4V Li-Ion batteries and chargers. The Accubird and Firebird will come standard with the 14.4V 1.3AH Li-Ion battery. The 14.4V 2.6AH Li-Ion battery can be bought separately as an accessory for these 2 tools. The Powerbird will come standard with the 14.4V 2.6AH Li-Ion battery.

### Compatibility

Due to the change in batteries and chargers, it is important to note that certain batteries are only compatible with certain chargers.

**Ni-Cd** batteries must only be charged with Ni-Cd + Ni-MH chargers. An exception to this is that some older style chargers are Ni-Cd only.

**Ni-MH** batteries must only be charged with Ni-Cd + Ni-MH chargers.

**Li-Ion** batteries must only be charged with Li-Ion chargers.

All chargers are labeled with the correct battery compatibility. Refer to the table above determine to the correct charger for the battery in use. When in doubt contact us directly at 1-800-777-4838 for technical assistance.