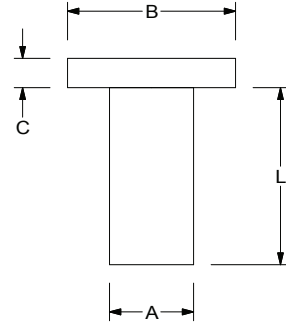




**TINNERS RIVETS**  

PART NUMBER	SIZE	BODY DIAMETER "A"	HEAD DIAMETER "B"	HEAD HEIGHT "C"	LENGTH "L"
		MIN / MAX	MIN / MAX	MIN / MAX	MIN / MAX
TRS006	6 OZ	.075/.081	.193/.213	.016/.028	.115/.135
TRS008	8 OZ	.085/.091	.205/.225	.024/.036	.146/.166
TRS010	10 OZ	.091/.097	.230/.250	.025/.037	.162/.182
TRS012	12 OZ	.101/.107	.245/.265	.025/.037	.178/.198
TRS014	14 OZ	.105/.111	.255/.275	.026/.038	.178/.198
TRSL01	1 LB	.107/.113	.265/.285	.028/.040	.193/.213
TRSL01.25	1 1/4 LB	.116/.122	.275/.295	.033/.045	.209/.229
TRSL01.5	1 1/2 LB	.126/.132	.294/.316	.034/.046	.224/.244
TRSL01.75	1 3/4 LB	.130/.136	.309/.331	.035/.049	.240/.260
TRSL02	2 LB	.140/.146	.319/.341	.036/.050	.256/.276
TRSL02.5	2 1/2 LB	.144/.150	.289/.311	.055/.069	.271/.291
TRSL03	3 LB	.154/.163	.303/.329	.059/.073	.303/.323
TRSL03.5	3 1/2 LB	.159/.168	.322/.348	.060/.074	.318/.338
TRSL04	4 LB	.170/.179	.342/.368	.062/.076	.334/.354
TRSL05	5 LB	.181/.190	.362/.388	.070/.084	.365/.385
TRSL06	6 LB	.197/.206	.393/.419	.076/.090	.381/.401
TRSL07	7 LB	.214/.223	.405/.431	.080/.094	.396/.416
TRSL08	8 LB	.218/.227	.445/.475	.085/.101	.428/.448
TRSL09	9 LB	.232/.241	.460/.490	.087/.103	.443/.463
TRSL10	10 LB	.232/.241	.475/.505	.088/.104	.459/.479
TRSL12	12 LB	.251/.263	.498/.532	.090/.108	.490/.510
TRSL14	14 LB	.276/.288	.543/.577	.095/.113	.505/.525
TRSL16	16 LB	.292/.304	.563/.597	.110/.128	.521/.541
TRSL18	18 LB	.335/.347	.668/.706	.136/.156	.583/.603

Tinners Rivets are solid steel rivets with either a tin or zinc finish. They are typically used in sheet metal fabrication.



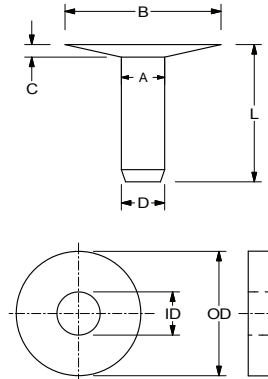
Size numbers in ounces and pounds refer to the approximate weight of 1,000 pieces of steel rivets.

**COPPER BELT RIVETS & BURS**

PART NUMBER	SIZE	COPPER BELT RIVETS			HEAD DIAMETER (Nominal) "B"	HEAD HEIGHT (Nominal) "C"
		BODY DIAMETER Under Head "A"	BODY DIAMETER Tip of Shank "D"	LENGTH OVER ALL "L"		
CBR0708	#7 x 1/2			.500		
CBR0710	#7 x 5/8	.191	.160	.625	.562	.070
CBR0712	#7 x 3/4			.750		
CBR0806	#8 x 3/8			.375		
CBR0808	#8 x 1/2			.500		
CBR0810	#8 x 5/8	.181	.155	.625	.500	.063
CBR0812	#8 x 3/4			.750		
CBR0906	#9 x 3/8			.375		
CBR0908	#9 x 1/2			.500		
CBR0910	#9 x 5/8	.161	.135	.625	.468	.058
CBR0912	#9 x 3/4			.750		
CBR1006	#10 x 3/8			.375		
CBR1008	#10 x 1/2			.500		
CBR1010	#10 x 5/8	.151	.130	.625	.437	.055
CBR1012	#10 x 3/4			.750		
CBR1206	#12 x 3/8			.375		
CBR1208	#12 x 1/2			.500		
CBR1210	#12 x 5/8	.137	.120	.625	.375	.045
CBR1212	#12 x 3/4			.75		

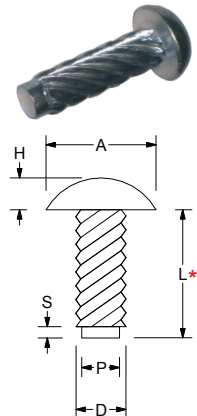
COPPER BURS	
INSIDE DIAMETER "ID"	OUTSIDE DIAMETER "OD"
.175	.500
.165	.475
.145	.440
.135	.405
.125	.365

Copper Belt Rivets are typically used in leather work. The bur is placed over the end of the rivet shank then the end of the rivet is peened with a hammer locking the bur in place.



**DRIVE SCREWS**

BASIC PART NUMBER FOR HARDENED STEEL ZINC FINISH *ADD LENGTH "L" IN 16THS OF AN INCH	BASIC PART NUMBER FOR 300 STAINLESS STEEL *ADD LENGTH "L" IN 16THS OF AN INCH	NOMINAL DRIVE SCREW SIZE	RECOMMENDED WORK HOLE SIZE		NUMBER OF THREADS	OUTSIDE DIAMETER "D"		HEAD DIAMETER "A"		HEAD HEIGHT "H"		PILOT DIAMETER "P"	
			HOLE DIAMETER	DRILL SIZE NUMBER		MIN	MAX	MIN	MAX	MIN	MAX	MIN	MAX
DS-000*	DSS-00*	00	.052	55	6	.057	.060	.090	.099	.026	.034	.046	.049
DS-00*	DSS-00*	0	.067	51	6	.072	.075	.118	.127	.041	.049	.060	.063
DS-02*	DSS-02*	2	.086	44	8	.097	.100	.146	.162	.059	.069	.080	.083
DS-04*	DSS-04*	4	.104	37	7	.112	.116	.193	.211	.075	.086	.092	.096
DS-06*	DSS-06*	6	.120	31	7	.136	.140	.240	.260	.091	.103	.112	.116
DS-07*	DSS-07*	7	.136	29	8	.150	.154	.264	.285	.099	.111	.122	.126
DS-08*	DSS-08*	8	.144	27	8	.162	.167	.287	.309	.107	.120	.132	.136
DS-10*	DSS-10*	10	.161	20	8	.177	.182	.334	.359	.123	.137	.146	.150
DS-12*	DSS-12*	12	.191	11	8	.206	.212	.382	.408	.139	.153	.173	.177
DS-14*	DSS-14*	14	.221	2	9	.236	.242	.429	.457	.155	.170	.198	.202
DS-31*	DSS-31*	5/16	.295	M	11	.309	.315	.557	.590	.198	.216	.267	.272
DS-37*	DSS-37*	3/8	.358	T	12	.371	.378	.670	.708	.237	.256	.329	.334
NOMINAL DRIVE SCREW LENGTH "L"					2/16	3/16	4/16	5/16	6/16	8/16	10/16	12/16	1" & longer
PILOT LENGTH "S"					.047	.047	.047	.047	.062	.062	.078	.078	.125



\*(Example Part #: DS-0605 for #6 x 5/16 Steel, Zinc Finish) Other Materials and Finishes available.