



HANSON RIVET

& SUPPLY CO.
13241 Weidner Street
Pacoima, CA 91331

Phone: 818-485-0500

FAX: 818-485-0540

Outside CA: 1-800-RRRIVET

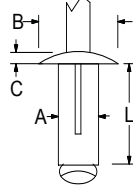
www.hansonrivet.com



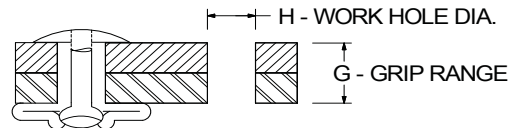
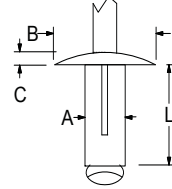
"TRI-GRIP" BLIND RIVET



LOW PROFILE HEAD



LARGE FLANGE




Bulbex® blind Rivets provide a large bearing surface that resists pull-out or cracking when set in plastics or other brittle and soft materials.

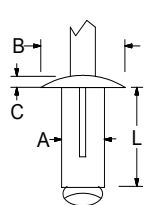


Backside of set rivet

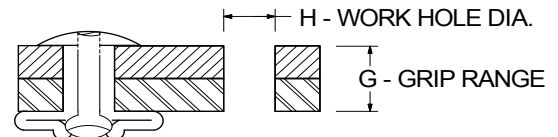
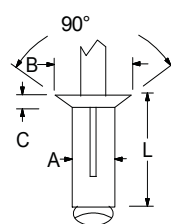
BULBEX® RIVETS

RIVET MATERIAL MANDREL MATERIAL	HEAD STYLE	PART NUMBER	FINISH	BODY DIAMETER (MAX.) "A"	WORK HOLE DIAMETER "H"	GRIP RANGE "G"	BODY LENGTH (MAX.) "L"	HEAD DIAMETER (NOM.) "B"	HEAD HEIGHT (MAX.) "C"	TYPICAL ULTIMATE STRENGTHS IN LBS. (SEE NOTE)	
										SHEAR	TENSILE
 ALUMINUM RIVET ALUMINUM MANDREL <small>Various colors and finishes available</small>	LOW PROFILE HEAD	OBF01-0516 OBF01-0523	PLAIN	.165	.165/.177	.040-.118 .040-.275	.630 .840	.312	.060	135	225
		OBF11-0516 OBF11-0523	BLACK ANODIZED	.165	.165/.177	.040-.118 .040-.275	.630 .840	.312	.060	135	225
		OBF01-0619 OBF01-0625 OBF01-0630	PLAIN	.197	.197/.207	.040-.157 .040-.354 .157-.472	.720 .920 1.07	.387	.080	175	240
		OBF11-0619 OBF11-0625 OBF11-0630	BLACK ANODIZED	.197	.197/.207	.040-.157 .040-.354 .157-.472	.720 .920 1.07	.387	.080	175	240
	LARGE FLANGE	OBF41-0619 OBF41-0625	PLAIN	.197	.197/.207	.040-.157 .040-.354	.720 .920	.610	.080	175	270

PROTRUDING HEAD



COUNTERSUNK




Klump-Tite® Structural Rivets have an external locking feature for the mandrel which provides exceptional shear and tensile strength, vibration resistance and clamp-up force. These rivets have a wide grip range and provide a large bearing surface that resists pull-out.



Backside of set rivet

KLAMP-TITE® STRUCTURAL RIVETS

A SPECIAL NOSEPIECE IS REQUIRED FOR INSTALLATION OF THESE RIVETS

RIVET MATERIAL MANDREL MATERIAL	HEAD STYLE	PART NUMBER	BODY DIAMETER "A"	WORK HOLE & DRILL SIZE "H"	GRIP RANGE "G"	BODY LENGTH (MAX.) "L"	HEAD DIAMETER (NOM.) "B"	HEAD HEIGHT (MAX.) "C"	TYPICAL ULTIMATE STRENGTHS IN LBS. (SEE NOTE)		
									SHEAR	TENSILE	
 ALUMINUM RIVET ALUMINUM MANDREL <small>Various colors and finishes available</small>	PROTRUDING HEAD	BAPKTR-06-04 BAPKTR-06-06 BAPKTR-06-09 BAPKTR-06-12	.197	.204/.209 #5	.050-.250 .187-.375 .375-.562 .562-.750	.890 .985 1.120 1.300	.445	.088	700	450	
		BAPKTR-08-04 BAPKTR-08-06	.242	.252/.262 F	.060-.250 .187-.375	.925 1.050	.560	.113	1250	700	
		90° COUNTERSUNK	BACKTR-06-06 BACKTR-06-12	.197	.204/.209 #5	.187-.375 .562-.750	.985 1.300	.335	.070	700	450

NOTE: Values for typical ultimate strengths are a guide only and may vary greatly depending upon the application.