



HANSON RIVET

& SUPPLY CO.
13241 Weidner Street
Pacoima, CA 91331

Phone: 818-485-0500

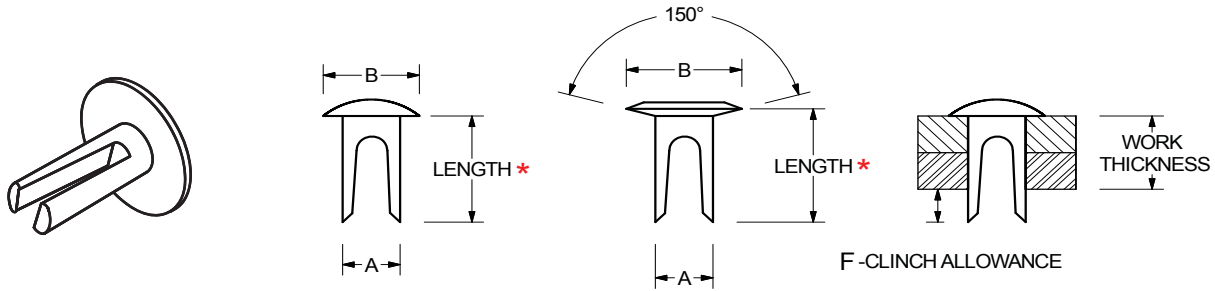
FAX: 818-485-0540

Outside CA: 1-800-RRRIVET

www.hansonrivet.com



SPLIT RIVETS



OVAL OR TRUSS STYLE HEAD 150° COUNTERSUNK STYLE HEAD

PART NUMBER	HEAD STYLE	BODY DIAMETER "A"	HEAD DIAMETER "B"	CLINCH ALLOWANCE "F"
SC1-*	OVAL	1/8	7/32	1/8
SC4-*	TRUSS	1/8	5/16	1/8
SC3-*	COUNTERSUNK	1/8	1/4	1/8
SD3-*	OVAL	9/64	5/16	9/64
SD5-*	TRUSS	9/64	3/8	9/64
SD9-*	COUNTERSUNK	9/64	5/16	9/64

***PART NUMBER SYSTEM**

Example: SD3-8-BL

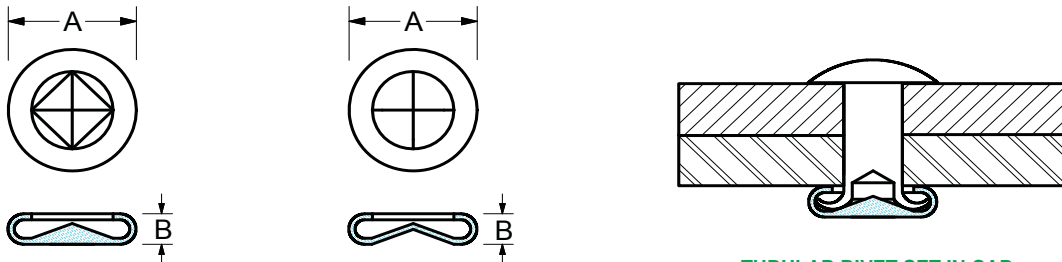
SD3-	8-	BL
PART NUMBER	LENGTH IN 32nds.	FINISH
9/64 Dia. Body 5/16 Dia. Head	8/32 = 1/4"	NI=Nickel BL=Black BZ=Black Zinc BR = Brass

***LENGTH (in 32nds) = WORK THICKNESS + CLINCH ALLOWANCE "F"**

Split Rivets are designed to pierce through soft materials such as wood, plastics, and leather. They are usually installed using Automatic Feed Riveters like those featured on page C88.

We stock Split Rivets made of steel. Other materials available by special order.

RIVET CAPS



CAP FOR TUBULAR RIVETS

CAP FOR SPLIT RIVETS

TUBULAR RIVET SET IN CAP
This gives a finished look on both sides of your work.

FOR RIVET BODY DIAMETER	PART NUMBER	RIVET TYPE	DIAMETER "A" MIN. / MAX.	HEIGHT "B" MIN. / MAX.
1/8	RCT-8-*	TUBULAR	.240/.260	.075/.085
	RCS-8-*	SPLIT	.270/.290	.075/.085
9/64	RCT-9-*	TUBULAR	.325/.345	.075/.085
	RCS-9-*	SPLIT	.325/.345	.075/.085
3/16	RCT-12-*	TUBULAR	.420/.440	.105/.115
	RCS-12-*	SPLIT	.420/.440	.105/.115

We stock Rivet Caps made of STEEL and BRASS.

Standard finishes are: **NICKEL (NI)** • **BLACK (BL)** • **BLACK ZINC (BZ)** • **BRASS (BR)**

*Part number example: RCT-9-NI (Steel Rivet Cap used with 9/64" diameter Tubular Rivets, Nickel Plated).