



**HANSON RIVET**

**& SUPPLY CO.**

13241 Weidner Street  
Pacoima, CA 91331

Please visit our website for additional sizes

Phone: 818-485-0500

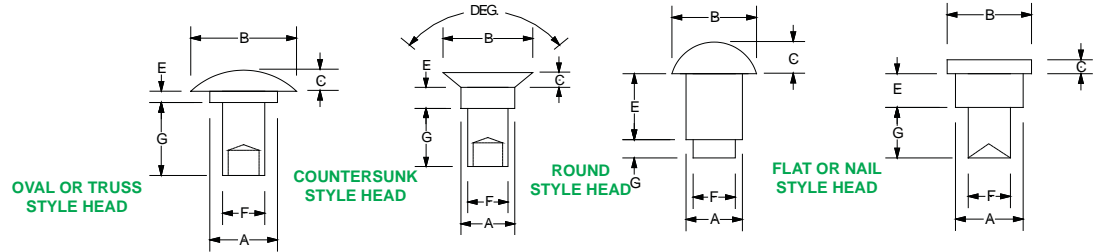
FAX: 818-485-0540

Outside CA: 1-800-RRRIVET

[www.hansonrivet.com](http://www.hansonrivet.com)



# SHOULDER RIVETS



PART NUMBER	HEAD STYLE	SHOULDER DIAMETER	SHOULDER LENGTH	TENON DIAMETER	TENON LENGTH	HEAD DIAMETER	HEAD HEIGHT	RIVET TYPE	MATERIAL	FINISH
		"A"	"E"	"F"	"G"	"B"	"C"			
6-0306-0302	OVAL	.110	.187	.095	.060	.185	.035	SOLID	STEEL	BRASS
6-0402-0303	OVAL	.118	.056	.090	.085	.221	.035	SEMI-TUBULAR	STEEL	NICKEL
6-0402-0303.1	OVAL	.120	.085	.087	.104	.220	.034	SEMI-TUBULAR	ALUMINUM	PLAIN
6-0402-0304	TRUSS	.135	.071	.091	.110	.310	.035	SEMI-TUBULAR	STEEL	NICKEL
6-0404-0304	100° CTSK	.140	.140	.110	.120	.215	.045	SEMI-TUBULAR	STEEL	ZINC
6-0404-0306	OVAL	.120	.135	.095	.200	.230	.034	SEMI-TUBULAR	STEEL	PLAIN
6-0404-0403	FLAT	.141	.130	.125	.090	.210	.035	SEMI-TUBULAR	304 STAINLESS	PASSIVATED
6-0406-0302	OVAL	.112	.187	.095	.060	.285	.034	SOLID	STEEL	PLAIN
6-0408-0304	FLAT	.125	.247	.090	.135	.250	.035	SEMI-TUBULAR	STEEL	TRIVALENT
6-0417-0303	OVAL	.120	.525	.085	.100	.205	.042	SEMI-TUBULAR	STEEL	NICKEL
6-0501-0403.5	120° CTSK	.140	.040	.121	.110	.240	.035	SEMI-TUBULAR	STEEL	ZINC
6-0503-0303	FLAT	.160	.093	.093	.094	.250	.093	SEMI-TUBULAR	STEEL	PLAIN
6-0505-0309	OVAL	.150	.150	.095	.295	.220	.030	SEMI-TUBULAR	STEEL	ZINC
6-0508-0304	TRUSS	.150	.250	.080	.110	.370	.065	SOLID	BRASS	PLAIN
6-0514-0303	OVAL	.155	.437	.090	.100	.285	.087	SOLID	ALUMINUM	PLAIN
6-0602-0402	OVAL	.175	.050	.120	.084	.280	.035	SEMI-TUBULAR	STEEL	TRIVALENT
6-0602-0403	OVAL	.179	.041	.120	.090	.280	.165	SEMI-TUBULAR	STEEL	TRIVALENT
6-0602-0403.1	FLAT	.170	.060	.125	.100	.360	.060	SEMI-TUBULAR	STEEL	TRIVALENT
6-0602-0502	FLAT	.198	.067	.151	.075	.312	.030	SEMI-TUBULAR	STEEL	TRIVALENT
6-0602-0502.1	FLAT	.198	.065	.151	.076	.312	.030	SOLID	STEEL	ZINC
6-0602-0504	OVAL	.198	.064	.151	.119	.312	.057	SEMI-TUBULAR	CRS STEEL	TRIVALENT
6-0602-0504.1	OVAL	.198	.056	.151	.120	.312	.062	SEMI-TUBULAR	STEEL	TRIVALENT
6-0602-0504.2	OVAL	.198	.060	.151	.119	.312	.062	SEMI-TUBULAR	STEEL	TRIVALENT
6-0602-0505	OVAL	.187	.074	.143	.161	.312	.065	SEMI-TUBULAR	ALUMINUM	PLAIN
6-0603-0405	FLAT	.186	.090	.123	.160	.385	.050	SOLID	STEEL	ZINC
6-0603-0405.1	OVAL	.186	.190	.120	.144	.442	.078	SEMI-TUBULAR	STEEL	ZINC
6-0603-0407	FLAT	.192	.090	.123	.218	.375	.032	SOLID	STEEL	PLAIN
6-0603-0504.1	TRUSS	.198	.109	.151	.135	.312	.062	SEMI-TUBULAR	STEEL	TRIVALENT
6-0603-0505.1	TRUSS	.185	.075	.145	.156	.375	.062	SEMI-TUBULAR	STEEL	ZINC
6-0603-0508	OVAL	.187	.093	.153	.250	.312	.062	SEMI-TUBULAR	5052	BLACK
6-0604-0404	OVAL	.155	.437	.090	.100	.285	.087	SOLID	ALUMINUM	PLAIN
6-0604-0404.1	OVAL	.185	.135	.120	.120	.310	.087	SOLID	1100F	PLAIN
6-0604-0404H.1	120° CTSK	.180	.125	.124	.142	.500	.125	SOLID	430 STAINLESS	PLAIN
6-0604-0405	FLAT	.180	.125	.124	.142	.300	.080	SOLID	430 STAINLESS	PLAIN

The Shoulder Rivets on this page are sizes we typically have in stock. We are constantly adding new sizes and can supply Shoulder Rivets made to your specifications. If you don't see what you are looking for please give us a call. We may have a limited supply of some sizes of Shoulder Rivets and may require a minimum order to produce more.



# HANSON RIVET

& SUPPLY CO.  
13241 Weidner Street  
Pacoima, CA 91331

Please visit our website for additional sizes

Phone: 818-485-0500

FAX: 818-485-0540

Outside CA: 1-800-RRRIVET

www.hansonrivet.com

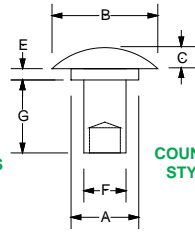


## SHOULDER RIVETS

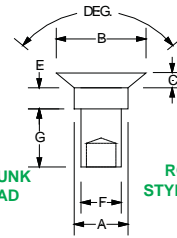


SHOULDER  
TENON

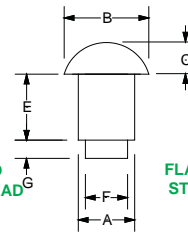
OVAL OR TRUSS  
STYLE HEAD



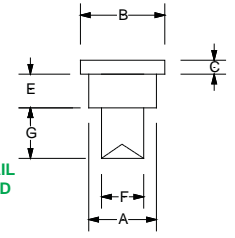
COUNTERSUNK  
STYLE HEAD



ROUND  
STYLE HEAD



FLAT OR NAIL  
STYLE HEAD



PART NUMBER	HEAD STYLE	SHOULDER DIAMETER	SHOULDER LENGTH	TENON DIAMETER	TENON LENGTH	HEAD DIAMETER	HEAD HEIGHT	RIVET TYPE	MATERIAL	FINISH
		"A"	"E"	"F"	"G"	"B"	"C"			
6-0605-0514	150° CTSK	.175	.150	.140	.250	.315	.032	SEMI-TUBULAR	ALUMINUM	PLAIN
6-0608-0504	FLAT	.185	.250	.156	.125	.250	.030	SEMI-TUBULAR	STEEL	ZINC
6-0691-0404	OVAL	.185	2.850	.145	.150	.310	.060	SEMI-TUBULAR	STEEL	PLAIN
6-0703-0605	FLAT	.227	.080	.187	.158	.375	.046	SOLID	STEEL	PLAIN
6-0703-0605.1	FLAT	.227	.080	.187	.158	.375	.046	SOLID	STEEL	TRIVALENT
6-0803-0502.5	FLAT	.245	.082	.152	.078	.402	.040	SOLID	STEEL	ZINC
6-0803-0503	FLAT	.236	.106	.154	.106	.394	.039	SOLID	STEEL	ZINC
6-0803-0504	FLAT	.271	.078	.154	.125	.375	.060	SEMI-TUBULAR	STEEL	ZINC
6-0803-0604	FLAT	.249	.094	.187	.132	.376	.060	SOLID	STEEL	ZINC
6-0803-0605.1	FLAT	.248	.102	.186	.140	.381	.062	SOLID	STEEL	ZINC
6-0805-0603	FLAT	.245	.149	.181	.093	.375	.027	SEMI-TUBULAR	STEEL	ZINC
6-0805-0605	FLAT	.248	.158	.185	.158	.400	.100	SEMI-TUBULAR	430 STAINLESS	PASSIVATED
6-0805-0608	OVAL	.248	.140	.185	.247	.440	.078	SEMI-TUBULAR	430 STAINLESS	PLAIN
6-0806-0605	FLAT	.246	.177	.185	.145	.400	.035	SEMI-TUBULAR	STEEL	BLACK ZINC
6-0806-0607.1	FLAT	.245	.180	.185	.218	.437	.062	SOLID	STEEL	ZINC
6-0812-0606	FLAT	.250	.375	.187	.187	.375	.065	SOLID	STEEL	ZINC
6-0814-0506	FLAT	.248	.433	.169	.188	.437	.215	SEMI-TUBULAR	STEEL	PLAIN
6-0904-0809	OVAL	.277	.136	.248	.284	.495	.085	SEMI-TUBULAR	STEEL	ZINC
6-1003-0807	FLAT	.314	.102	.247	.215	.500	.120	SOLID	C1006 STEEL	ZINC
6-1003-0807.1	FLAT	.315	.105	.245	.205	.445	.105	SOLID	STEEL	PLAIN
6-1003-0808	FLAT	.304	.100	.243	.218	.440	.077	SEMI-TUBULAR	STEEL	ZINC
6-1003-0808.1	FLAT	.290	.076	.248	.268	.437	.087	SEMI-TUBULAR	STEEL	PLAIN
6-1003-0808.2	FLAT	.290	.100	.248	.268	.437	.087	SEMI-TUBULAR	STEEL	PLAIN
6-1004-0807	FLAT	.314	.117	.247	.215	.314	.117	SOLID	C1006 STEEL	ZINC
6-1005-0807	FLAT	.312	.140	.250	.210	.500	.125	SOLID	C1106 STEEL	YELLOW
6-1005-0809	FLAT	.312	.159	.244	.281	.500	.060	SEMI-TUBULAR	430 STAINLESS	PLAIN
6-1006-0606	FLAT	.312	.188	.185	.188	.612	.093	SEMI-TUBULAR		PLAIN
6-1006-0609	OVAL	.313	.188	.188	.290	.612	.093	SEMI-TUBULAR		PLAIN
6-1009-0810	PAN	.312	.275	.248	.330	.500	.150	SEMI-TUBULAR	STEEL	PLAIN
6-1010-0808.1	FLAT	.310	.312	.247	.260	.500	.070	SEMI-TUBULAR	STEEL	BLACK ZINC
6-1010-0809	FLAT	.312	.312	.250	.281	.500	.062	SEMI-TUBULAR	430 STAINLESS	PLAIN
6-1020-0618	FLAT	.320	.630	.195	.560	.500	.100	SOLID	C1006 STEEL	PLAIN
6-1203-0805	FLAT	.375	.085	.250	.146	.625	.060	SEMI-TUBULAR	STEEL	CLEAR ZINC
6-1205-0807	OVAL	.375	.150	.250	.210	.500	.055	SOLID	STEEL	PLAIN
6-1209-1011	FLAT	.375	.280	.312	.338	.750	.100	SEMI-TUBULAR	STEEL	BLACK ZINC
6-1225-1011	FLAT	.375	.780	.312	.338	.750	.100	SEMI-TUBULAR	STEEL	BLACK ZINC
6-2006-1413	FLAT	.625	.170	.435	.400	.980	.135	SEMI-TUBULAR	STEEL	BLACK

The Shoulder Rivets on this page are sizes we typically have in stock. We are constantly adding new sizes and can supply Shoulder Rivets made to your specifications. If you don't see what you are looking for please give us a call. We may have a limited supply of some sizes of Shoulder Rivets and may require a minimum order to produce more.