



HANSON RIVET

& SUPPLY CO.
13241 Weidner Street
Pacoima, CA 91331

Phone: 818-485-0500

FAX: 818-485-0540

Outside CA: 1-800-RRRIVET

www.hansonrivet.com



SQUEEZER DIES



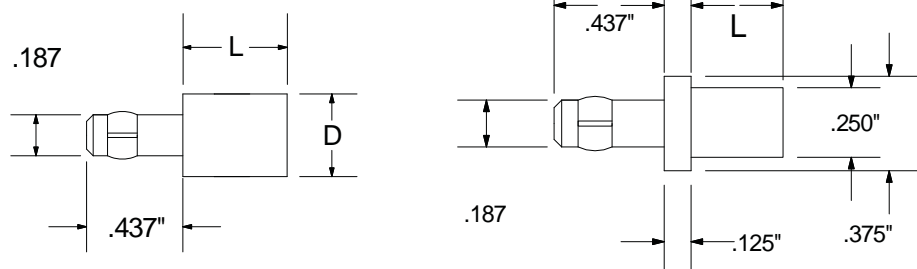
FLUSH DIES FOR FLAT HEAD RIVETS



BASIC

PART NUMBER:

CA2003-* FLUSH STYLE



"D" DIA.= 3/8"		"D" DIA.= 1/2"		"D" DIA.= 3/4"		"D" DIA.= 1"	
"L"	*DASH No.	"L"	*DASH No.	"L"	*DASH No.	"L"	*DASH No.
1/8	- 1	1/8	- 16	1/8	- 31	1/8	- 46
3/16	- 2	3/16	- 17	3/16	- 32	3/16	- 47
1/4	- 3	1/4	- 18	1/4	- 33	1/4	- 48
5/16	- 4	5/16	- 19	5/16	- 34	5/16	- 49
3/8	- 5	3/8	- 20	3/8	- 35	3/8	- 50
7/16	- 6	7/16	- 21	7/16	- 36	7/16	- 51
1/2	- 7	1/2	- 22	1/2	- 37	1/2	- 52
9/16	- 8	9/16	- 23	9/16	- 38	9/16	- 53
5/8	- 9	5/8	- 24	5/8	- 39	5/8	- 54
11/16	- 10	11/16	- 25	11/16	- 40	11/16	- 55
3/4	- 11	3/4	- 26	3/4	- 41	3/4	- 56
13/16	- 12	13/16	- 27	13/16	- 42	13/16	- 57
7/8	- 13	7/8	- 28	7/8	- 43	7/8	- 58
15/16	- 14	15/16	- 29	15/16	- 44	15/16	- 59
1	- 15	1	- 30	1	- 45	1	- 60

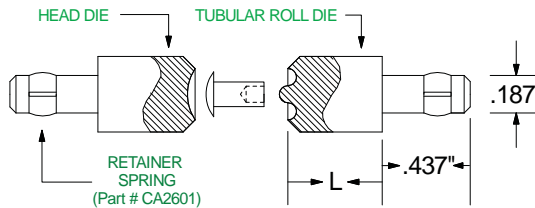
SHOULDER STYLE	
"L"	*DASH No.
1/8	- 61
3/16	- 62
1/4	- 63
5/16	- 64
3/8	- 65
7/16	- 66
1/2	- 67
9/16	- 68
5/8	- 69
11/16	- 70
3/4	- 71
13/16	- 72
7/8	- 73
15/16	- 74
1	- 75

CUPPED AND ROLLING DIES FOR SOLID AND TUBULAR RIVETS

BASIC
PART NUMBER:

DIE STYLE:

- CA2000-* ROUND HEAD
- CA2001-* BRAZIER HEAD
- CA2002-* UNIVERSAL HEAD
- CA2004-* OVAL / TRUSS HEAD
- CA2005-* TUBULAR ROLL



1/16" DIA. RIVET		3/32" DIA. RIVET		1/8" DIA. RIVET		9/64" & 5/32" DIA. RIVET		3/16" DIA. RIVET		1/4" DIA. RIVET		5/16" DIA. RIVET		3/8" DIA. RIVET	
"L"	*DASH No.	"L"	*DASH No.	"L"	*DASH No.	"L"	*DASH No.	"L"	*DASH No.	"L"	*DASH No.	"L"	*DASH No.	"L"	*DASH No.
1/8	- 01x	1/8	- 1x	1/8	- 8x	1/8	- 15x	1/8	- 22x	1/8	- 29x	1/8	- 36x	1/8	- 43x
1/4	- 01	1/4	- 1	1/4	- 8	1/4	- 15	1/4	- 22	1/4	- 29	1/4	- 36	1/4	- 43
3/8	- 02	3/8	- 2	3/8	- 9	3/8	- 16	3/8	- 23	3/8	- 30	3/8	- 37	3/8	- 44
1/2	- 03	1/2	- 3	1/2	- 10	1/2	- 17	1/2	- 24	1/2	- 31	1/2	- 38	1/2	- 45
5/8	- 04	5/8	- 4	5/8	- 11	5/8	- 18	5/8	- 25	5/8	- 32	5/8	- 39	5/8	- 46
3/4	- 05	3/4	- 5	3/4	- 12	3/4	- 19	3/4	- 26	3/4	- 33	3/4	- 40	3/4	- 47
7/8	- 06	7/8	- 6	7/8	- 13	7/8	- 20	7/8	- 27	7/8	- 34	7/8	- 41	7/8	- 48
1	- 07	1	- 7	1	- 14	1	- 21	1	- 28	1	- 35	1	- 42	1	- 49

The dies on this page fit our Hand and Air Rivet Squeezers, HT-100 Tool, and Riveters on pages D78, D82 and D84-D87.