



HANSON RIVET

& SUPPLY CO.
13241 Weidner Street
Pacoima, CA 91331

See pages B78-B92 for
installation tools and
machines

Phone: 818-485-0500

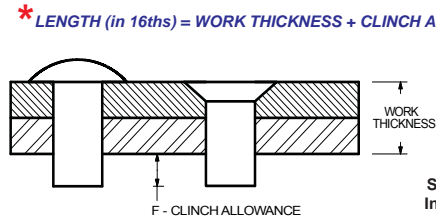
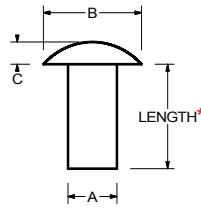
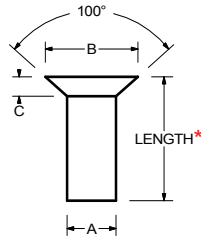
FAX: 818-485-0540

Outside CA: 1-800-RRRIVET

www.hansonrivet.com



AEROSPACE SOLID RIVETS



* LENGTH (in 16ths) = WORK THICKNESS + CLINCH ALLOWANCE "F"

See page C93 for
Installation Guide

Nominal Body Diameter:

		1/16	3/32	1/8	5/32	3/16	1/4	5/16	3/8
MS20426 100° COUNTERSUNK	"A" BODY DIAMETER	.061/.065	.093/.097	.124/.128	.155/.159	.186/.190	.249/.253	.311/.315	.374/.378
	"B" HEAD DIAMETER	.110/.118	.175/.183	.221/.229	.282/.290	.349/.357	.472/.480	.560/.568	.690/.698
	"C" HEAD HEIGHT	.022 REF.	.036 REF.	.042 REF.	.055 REF.	.070 REF.	.095 REF.	.106 REF.	.134 REF.
MS20427 100° COUNTERSUNK	"A" BODY DIAMETER	.061/.065	.093/.097	.124/.128	.155/.159	.186/.190	.249/.253	.311/.315	.374/.378
	"B" HEAD DIAMETER	.0898/.1346	.1548/.1900	.2006/.2360	.2566/.2976	.3234/.3654	.4412/.4890	.5288/.5772	.6586/.7074
	"C" HEAD HEIGHT	.0317 MAX.	.0418 MAX.	.0483 MAX.	.0614 MAX.	.0769 MAX.	.1034 MAX.	.1147 MAX.	.1436 MAX.
AN430 ROUND HEAD	"A" BODY DIAMETER	.061/.065	.093/.097	.124/.1285	.155/.160	.186/.191	.249/.254	.311/.316	.374/.379
	"B" HEAD DIAMETER	.119/.131	.178/.196	.250/.262	.296/.328	.356/.394	.475/.525	.594/.656	.713/.787
	"C" HEAD HEIGHT	.042/.052	.065/.075	.089/.099	.112/.122	.134/.148	.179/.197	.222/.246	.267/.295
MS20435 ROUND HEAD	"A" BODY DIAMETER	.059/.066	.090/.097	.121/.129	.152/.160	.183/.192	.245/.254	.305/.317	.365/.380
	"B" HEAD DIAMETER	.109	.166	.219	.273	.327	.438	.546	.656
	"C" HEAD HEIGHT	.047	.071	.094	.117	.140	.188	.234	.281
AN441 FLAT HEAD	"A" BODY DIAMETER	.059/.066	.090/.097	.121/.129	.152/.160	.183/.192	.245/.254	.305/.317	.365/.380
	"B" HEAD DIAMETER	.126	.190	.250	.312	.374	.500	.624	.750
	"C" HEAD HEIGHT	.021	.032	.042	.052	.062	.083	.104	.125
AN442 FLAT HEAD	"A" BODY DIAMETER	.061/.065	.093/.097	.124/.1285	.155/.160	.186/.191	.249/.254	.311/.316	.374/.379
	"B" HEAD DIAMETER	.119/.131	.178/.196	.238/.262	.296/.328	.356/.394	.475/.525	.594/.656	.713/.787
	"C" HEAD HEIGHT	.020/.030	.033/.043	.045/.055	.057/.067	.070/.080	.095/.105	.120/.130	.143/.157
AN455 BRAZIER HEAD	"A" BODY DIAMETER	.061/.065	.093/.097	.124/.1285	.155/.160	.186/.191	.249/.254	.311/.316	.374/.379
	"B" HEAD DIAMETER	.148/.164	.222/.246	.296/.328	.371/.411	.446/.492	.594/.656	.742/.820	.890/.984
	"C" HEAD HEIGHT	.026/.036	.042/.052	.057/.067	.073/.083	.089/.099	.119/.131	.148/.164	.178/.196
AN456 MODIFIED BRAZIER HEAD	"A" BODY DIAMETER	.061/.065	.093/.097	.124/.1285	.155/.160	.186/.191	.249/.254	.311/.316	.374/.379
	"B" HEAD DIAMETER	.106/.126	.146/.166	.225/.245	.302/.322	.380/.400	.458/.478	.613/.637	.766/.796
	"C" HEAD HEIGHT	.020/.030	.026/.036	.042/.052	.058/.068	.073/.083	.089/.099	.120/.130	.151/.161
MS20470 UNIVERSAL HEAD	"A" BODY DIAMETER	.061/.065	.093/.097	.124/.128	.155/.159	.186/.190	.249/.253	.311/.315	.374/.378
	"B" HEAD DIAMETER	.119/.131	.178/.196	.238/.262	.296/.328	.356/.394	.475/.525	.594/.656	.713/.787
	"C" HEAD HEIGHT	.027/.037	.040/.050	.054/.064	.067/.077	.080/.090	.107/.117	.133/.143	.161/.171
MS20613 UNIVERSAL HEAD	"A" BODY DIAMETER	.061/.065	.093/.097	.124/.128	.155/.160	.186/.191	.249/.254	.311/.316	.374/.379
	"B" HEAD DIAMETER	.119/.131	.178/.196	.238/.262	.296/.328	.356/.394	.475/.525	.594/.656	.713/.787
	"C" HEAD HEIGHT	.027/.037	.040/.050	.054/.064	.067/.077	.080/.090	.107/.117	.133/.143	.161/.171
MS20615 UNIVERSAL HEAD	"A" BODY DIAMETER	.061/.065	.093/.097	.124/.128	.155/.160	.186/.191	.249/.254	.311/.316	.374/.379
	"B" HEAD DIAMETER	.119/.131	.178/.196	.238/.262	.296/.328	.356/.394	.475/.525	.594/.656	.713/.787
	"C" HEAD HEIGHT	.027/.037	.040/.050	.054/.064	.067/.077	.080/.090	.107/.117	.133/.143	.161/.171
AN123151 thru AN123450 UNIVERSAL HEAD	"A" BODY DIAMETER	.061/.063	.093/.095	.123/.126	.154/.157	.186/.189	.248/.252	.310/.314	.373/.377
	"B" HEAD DIAMETER	.119/.131	.179/.197	.238/.262	.296/.328	.356/.394	.475/.525	.594/.656	.713/.787
	"C" HEAD HEIGHT	.027/.037	.040/.050	.054/.064	.067/.077	.080/.090	.107/.117	.133/.143	.161/.171
AN123451 thru AN135100 100° COUNTERSUNK	"A" BODY DIAMETER	.061/.063	.093/.095	.123/.126	.154/.157	.186/.189	.248/.252	.310/.314	.373/.377
	"B" HEAD DIAMETER	.099/.107	.164/.172	.210/.218	.272/.280	.337/.347	.460/.470	.548/.558	.678/.688
	"C" HEAD HEIGHT	.019/.023	.033/.037	.039/.043	.052/.056	.067/.071	.092/.096	.103/.107	.131/.135
AN125401 thru AN125700 UNIVERSAL HEAD	"A" BODY DIAMETER	.061/.065	.093/.097	.124/.128	.155/.160	.186/.191	.249/.254	.311/.316	.374/.379
	"B" HEAD DIAMETER	.119/.131	.178/.196	.238/.262	.296/.328	.356/.394	.475/.525	.594/.656	.713/.787
	"C" HEAD HEIGHT	.027/.037	.040/.050	.054/.064	.067/.077	.080/.090	.107/.117	.133/.143	.161/.171
NAS508 UNIVERSAL HEAD	"A" BODY DIAMETER	.061/.065	.093/.097	.124/.128	.155/.160	.186/.191	.249/.254		
	"B" HEAD DIAMETER	.119/.131	.178/.196	.238/.262	.296/.328	.356/.394	.475/.525		
	"C" HEAD HEIGHT	.027/.037	.040/.050	.054/.064	.067/.077	.080/.090	.107/.117		
NAS1097 100° FLUSH SHEAR	"A" BODY DIAMETER		.093/.097	.124/.127	.155/.158	.186/.189	.249/.252		
	"B" HEAD DIAMETER		.1263/.1478	.1742/.1957	.2254/.2469	.2824/.3016	.3756/.3948		
	"C" HEAD HEIGHT		.021 REF.	.0286 REF.	.0372 REF.	.046 REF.	.060 REF.		
NAS1198 UNIVERSAL HEAD	"A" BODY DIAMETER	.061/.065	.093/.097	.124/.128	.155/.160	.186/.191	.249/.254		
	"B" HEAD DIAMETER	.119/.131	.178/.196	.238/.262	.296/.328	.356/.394	.475/.525		
	"C" HEAD HEIGHT	.027/.037	.040/.050	.054/.064	.067/.077	.080/.090	.107/.117		
NAS1199 100° COUNTERSUNK	"A" BODY DIAMETER	.061/.065	.093/.097	.124/.128	.155/.160	.186/.190	.249/.254		
	"B" HEAD DIAMETER	.0898/.1346	.1548/.1900	.2006/.2360	.2566/.2976	.3234/.3654	.4412/.4890		
	"C" HEAD HEIGHT	.0317 MAX.	.0418 MAX.	.0483 MAX.	.0614 MAX.	.0769 MAX.	.1034 MAX.		
	"F" SUGGESTED CLINCH ALLOWANCE:	.062	.094	.125	.156	.187	.250	.312	.375
	SUGGESTED WORK HOLE DIAMETER:	.067	.098	.129	.161	.191	.257	.323	.386
	SUGGESTED DRILL SIZE:	51	40	30	20	11	F	P	W



HANSON RIVET

& SUPPLY CO.

13241 Weidner Street
Pacoima, CA 91331

Phone: 818-485-0500

FAX: 818-485-0540

Outside CA: 1-800-RRRIVET

www.hansonrivet.com

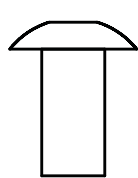


AEROSPACE SOLID RIVETS

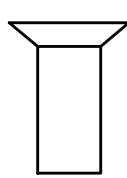
MATERIALS, HEAD STYLES & MARKS



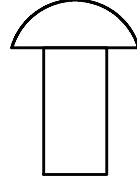
MATERIAL & HEAD MARKING



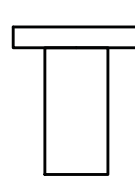
UNIVERSAL HEAD



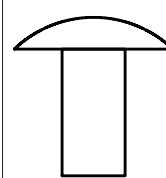
100° COUNTERSUNK HEAD



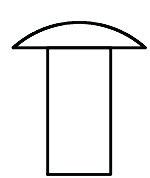
ROUND HEAD



FLAT HEAD



BRAZIER HEAD



MODIFIED BRAZIER HEAD

MATERIAL & HEAD MARKING	UNIVERSAL HEAD	100° COUNTERSUNK HEAD	ROUND HEAD	FLAT HEAD	BRAZIER HEAD	MODIFIED BRAZIER HEAD
1100-F ALUMINUM No Head Mark	MS20470A	MS20426A	AN430A	AN442A	AN455A	AN456A
2117-T4 ALUMINUM Dimple	MS20470AD	MS20426AD	AN430AD	AN442AD	AN455AD	AN456AD
5056-H32 ALUMINUM Raised Cross	MS20470B	MS20426B	AN430B	AN442B	AN455B	AN456B
2017-T4 ALUMINUM Raised Dot	MS20470D	MS20426D	AN430D	AN442D	AN455D	AN456D
2024-T4 ALUMINUM Raised Double Dash	MS20470DD	MS20426DD	AN430DD	AN442DD	AN455DD	AN456DD
2219-T81 ALUMINUM Indented Square	MS20470K	MS20426K				
7050-T73 ALUMINUM Indented Ring	MS20470E	MS20426E				
45Cb TITANIUM Indented Diamond	MS20470T	MS20426T				
2219-T62 ALUMINUM Indented Triangle	MS20470J	MS20426J				
CARBON STEEL Head Mark Varies	MS20613_P AN125551 to AN125700	MS20427	MS20435	AN441		
COPPER No Head Mark	MS20615_CU	MS20427C	MS20435C	AN441C		
BRASS No Head Mark	MS20615_B	MS20427B	MS20435B	AN441B		
300 SERIES STAINLESS Head Mark Varies	MS20613_C AN125401 to AN125550	MS20427F AN124951 to AN125100	MS20435F	AN441F		
MONEL Head Mark Varies	MS20615_M NAS508	MS20427M	MS20435M	AN441M		
INCONEL No Head Mark	AN123301 to AN123450	AN123601 to AN123750				
347 STAINLESS No Head Mark	AN123151 to AN123300	AN123451 to AN123600				
A286 HIGH TEMP STAINLESS Raised Dot	NAS1198	NAS1199				