



HANSON RIVET

& SUPPLY CO.

13241 Weidner Street
Pacoima, CA 91331

See pages C78-C92 for
installation tools and
machines

Phone: 818-485-0500

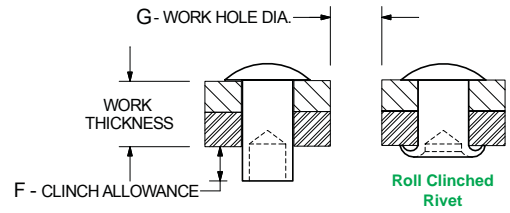
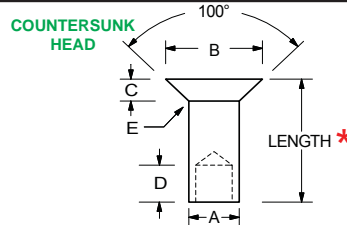
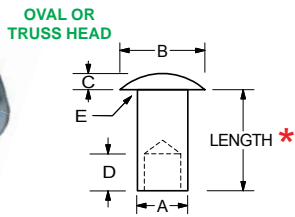
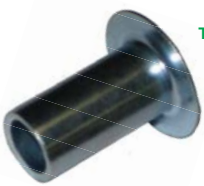
FAX: 818-485-0540

Outside CA: 1-800-RRRIVET

www.hansonrivet.com



TUBULAR RIVETS



* LENGTH (in 32nds) = WORK THICKNESS + CLINCH ALLOWANCE "F" (Example Part #: C1-9-ST for 1/8 x 9/32 - specify material and finish)

NOMINAL BODY DIAMETER	PART NUMBER PREFIX	HEAD STYLE	BODY DIAMETER "A" MIN / MAX	HEAD DIAMETER "B" MIN / MAX	HEAD HEIGHT "C" MIN / MAX	HOLE DEPTH "D" CAN VARY	FILLET RADIUS "E"	CLINCH ALLOWANCE "F"	WORK HOLE "G"
3/64	AAA1- *-ST	OVAL	.046/.049	.078/.083	.011/.014	.035	.003	.027	.052
	AAA2- *-ST	TRUSS	.046/.049	.090/.094	.018/.022	.035	.003	.027	.052
1/16	AA1- *-ST	OVAL	.058/.061	.104/.114	.015/.019	.044	.005	.037	.064
	AA2- *-ST	TRUSS	.058/.061	.120/.130	.015/.019	.044	.005	.037	.064
	AAX2- *-ST	TRUSS	.062/.065	.123/.128	.023/.027	.047	.005	.039	.070
	AA100- *-ST	100° COUNTERSUNK	.058/.061	.106/.112	.020/.024	.043	.005	.037	.064
3/32	AB1- *-ST	OVAL	.085/.089	.142/.152	.020/.026	.064	.010	.054	.096
	AB8- *-ST	TRUSS	.085/.089	.182/.192	.020/.026	.064	.010	.054	.096
	BC1- *-ST	TRUSS	.095/.099	.182/.192	.026/.032	.071	.012	.060	.107
	AB100- *-ST	100° COUNTERSUNK	.085/.089	.164/.172	.037/.043	.064	.010	.054	.096
	AB101- *-ST	100° COUNTERSUNK	.085/.089	.142/.152	.028/.033	.064	.010	.054	.096
1/8	C1- *-ST	OVAL	.118/.123	.213/.223	.030/.038	.089	.016	.074	.129
	C4- *-ST	TRUSS	.118/.123	.276/.286	.030/.038	.089	.016	.074	.129
	CD1- *-ST	OVAL	.120/.125	.214/.222	.030/.035	.089	.016	.075	.136
	C100- *-ST	100° COUNTERSUNK	.118/.123	.245/.255	.059/.065	.089	.016	.074	.129
	C101- *-ST	100° COUNTERSUNK	.118/.123	.213/.223	.044/.050	.089	.016	.074	.129
	C120- *-ST	120° COUNTERSUNK	.118/.123	.214/.222	.030/.035	.089	.016	.074	.129
9/64	D1- *-ST	OVAL	.141/.146	.229/.239	.035/.045	.106	.020	.088	.156
	D3- *-ST	TRUSS	.141/.146	.306/.318	.035/.045	.106	.020	.088	.156
	D5- *-ST	TRUSS	.141/.146	.370/.380	.059/.065	.106	.020	.088	.156
	D100- *-ST	100° COUNTERSUNK	.141/.146	.307/.317	.075/.081	.106	.020	.088	.156
	D101- *-ST	100° COUNTERSUNK	.141/.146	.229/.239	.041/.046	.106	.020	.088	.156
5/32	DF4- *-ST	OVAL	.150/.156	.245/.255	.043/.049	.113	.020	.094	.166
	DF11- *-ST	TRUSS	.150/.156	.307/.317	.043/.049	.113	.020	.094	.166
	DF100- *-ST	100° COUNTERSUNK	.150/.156	.273/.283	.050/.060	.113	.020	.094	.166
3/16	E1- *-ST	OVAL	.182/.188	.306/.318	.055/.065	.137	.020	.122	.201
	E3- *-ST	TRUSS	.182/.188	.369/.381	.055/.065	.137	.025	.122	.201
	E100- *-ST	100° COUNTERSUNK	.182/.188	.354/.364	.078/.084	.137	.020	.122	.201
	E101- *-ST	100° COUNTERSUNK	.182/.188	.306/.318	.057/.067	.137	.020	.122	.201
7/32	FE1- *-ST	TRUSS	.210/.217	.430/.444	.061/.075	.159	.025	.140	.234
1/4	G4- *-ST	OVAL	.244/.252	.430/.444	.073/.083	.182	.030	.164	.266
	G11- *-ST	TRUSS	.244/.252	.490/.510	.071/.085	.182	.030	.164	.266
	G100- *-ST	100° COUNTERSUNK	.244/.252	.455/.475	.093/.103	.182	.030	.164	.266
5/16	T1- *-ST	OVAL	.302/.310	.490/.510	.071/.085	.227	.030	.203	.332
	T2- *-ST	OVAL	.302/.310	.550/.570	.086/.100	.227	.030	.203	.332
	T5- *-ST	TRUSS	.302/.310	.745/.755	.150/.160	.227	.030	.203	.332
3/8	U2- *-ST	OVAL	.370/.380	.615/.635	.095/.105	.281	.032	.225	.390
	U3- *-ST	TRUSS	.370/.380	.680/.700	.120/.130	.281	.040	.225	.390
7/16		We carry limited sizes of 7/16" and 1/2" diameter tubular rivets in stock. Please call us with your requirements.							
1/2									

Standard materials: **STEEL • ALUMINUM • BRASS • COPPER • STAINLESS STEEL • MONEL**

Many finishes and colors available. We also stock many non-standard sizes.

NOTE: Countersunk head dimensions may be theoretical to sharp edge of head. For other Head Styles please call our sales department.



HANSON RIVET

& SUPPLY CO.
13241 Weidner Street
Pacoima, CA 91331

See pages C78-C92 for
installation tools and
machines

Phone: 818-485-0500

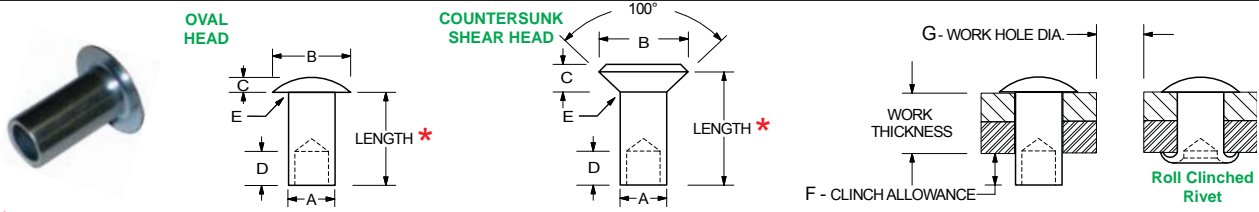
FAX: 818-485-0540

Outside CA: 1-800-RRRIVET

www.hansonrivet.com



MIL-SPEC TUBULAR RIVETS



* LENGTH (in 32nds) = WORK THICKNESS + CLINCH ALLOWANCE "F" (Example Part #: MS20450-C8-9 for 1/8 x 9/32 specify material and finish)

BASIC MIL-SPEC PART NUMBER	HEAD STYLE	BODY DIAMETER "A" MIN / MAX	HEAD DIAMETER "B" MIN / MAX	HEAD HEIGHT "C" MIN / MAX	HOLE DEPTH "D"	FILLET RADIUS "E"	CLINCH ALLOWANCE "F"	WORK HOLE "G"
MS20450-C4-*	OVAL	.058/.061	.104/.114	.015/.019	.044	.005	.037	.064
MS20450-C6-*	OVAL	.085/.089	.142/.152	.020/.026	.064	.010	.054	.096
MS20450-D6-*	100° SHEAR	.085/.089	.164/.172	.065 REF.	.062	.010	.054	.096
MS20450-C8-*	OVAL	.118/.123	.213/.223	.030/.038	.089	.016	.074	.129
MS20450-D8-*	100° SHEAR	.118/.123	.245/.255	.075/.085	.062	.010	.074	.129
MS20450-C9-*	OVAL	.141/.146	.229/.239	.035/.045	.106	.020	.088	.156
MS20450-D9-*	100° SHEAR	.141/.146	.307/.317	.086/.096	.125	.010	.088	.156
MS20450-C12-*	OVAL	.182/.188	.306/.318	.055/.065	.137	.020	.122	.201

Standard materials: **STEEL • ALUMINUM • BRASS • COPPER • STAINLESS STEEL • MONEL**

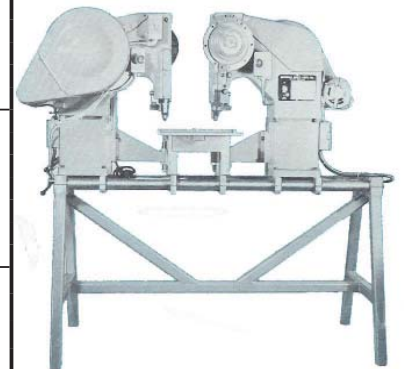
Many finishes and colors available. We also stock many non-standard sizes.

NOTE: Countersunk head dimensions may be theoretical to sharp edge of head. For other Head Styles please call our sales department.

BINDER RIVETS

PART NUMBER	LENGTH	CARTON QUANTITY	CARTON WEIGHT	DESCRIPTION
D3-6-DT	3/16	30,000	33 Lbs.	BINDER RIVET STEEL, DEEP TUBULAR COLORS AVAILABLE: BLACK, NICKEL, BRASS, WHITE, & CUSTOM COLORS
D3-8-DT	4/16	27,000	37 Lbs.	
D3-10-DT	5/16	22,000	37 Lbs.	
D3-12-DT	6/16	19,000	36 Lbs.	
D3-14-DT	7/16	17,000	38 Lbs.	
D3-16-DT	8/16	16,000	40 Lbs.	
D3-18-DT	9/16	14,000	39 Lbs.	
D3-20-DT	10/16	13,000	40 Lbs.	
D3-24-DT	12/16	12,000	40 Lbs.	
4-3S	3/16	30,000	33 Lbs.	FLAT / 150° COUNTERSUNK BINDER RIVET STEEL, DEEP TUBULAR COLORS AVAILABLE: BLACK, NICKEL, BRASS, WHITE, & CUSTOM COLORS
4-4S	4/16	27,000	37 Lbs.	
4-5S	5/16	22,000	37 Lbs.	
4-6S	6/16	19,000	36 Lbs.	
4-7S	7/16	17,000	38 Lbs.	
4-8S	8/16	16,000	40 Lbs.	
4-9S	9/16	14,000	39 Lbs.	
4-10S	10/16	12,000	38 Lbs.	
4-12S	12/16	10,000	35 Lbs.	
4-3A	3/16	30,000	14 Lbs.	"CONCEALED" BINDER RIVET FLAT / 150° COUNTERSUNK ALUMINUM SEMI-TUBULAR STANDARD FINISH: PLAIN
4-4A	4/16	27,000	14 Lbs.	
4-5A	5/16	22,000	13 Lbs.	
4-6A	6/16	19,000	14 Lbs.	
4-7A	7/16	17,000	14 Lbs.	
4-8A	8/16	16,000	15 Lbs.	
4-9A	9/16	14,000	15 Lbs.	
4-10A	10/16	13,000	15 Lbs.	
BAF-4	4/16	26,000	13 Lbs.	"CONCEALED" BINDER RIVET FLAT NAIL HEAD ALUMINUM SEMI-TUBULAR STANDARD FINISH: PLAIN
BAF-5	5/16	24,000	13 Lbs.	
BAF-6	6/16	20,000	13 Lbs.	
BAF-7	7/16	18,000	13 Lbs.	
BAF-8	8/16	16,000	13 Lbs.	
BAF-9	9/16	14,000	13 Lbs.	
RA-40721	5/16	QUANTITY PRICE BREAKS (BULK PACKAGED) 5,000 • 10,000 • 25,000 • 50,000 100,000 • 250,000 • 500,000	13 Lbs.	"STAKING" BINDER RIVET ALUMINUM SEMI-TUBULAR STANDARD FINISH: PLAIN
RA-41474	6/16		13 Lbs.	
RA-40723	7/16		13 Lbs.	
RA-40720	8/16		13 Lbs.	
RA-40722	9/16		13 Lbs.	

LOOSE LEAF BINDER ASSEMBLY MACHINE
 The machine pictured below combines the rugged dependability of two automatic feed National Model 500B Riveters with a fully adjustable base to provide the most efficient way to rivet loose leaf binders. A hand crank allows the two riveting heads to be quickly and easily moved to any center distance between 2-1/2" and 18". The locating fixture is designed to optimize both the production rate and accuracy of part location, and is easily adjustable for various binder sizes.



D3