



HANSON RIVET

& SUPPLY CO.
13241 Weidner Street
Pacoima, CA 91331

Phone: 818-485-0500

FAX: 818-485-0540

Outside CA: 1-800-RRRIVET

www.hansonrivet.com



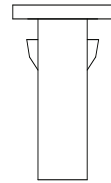
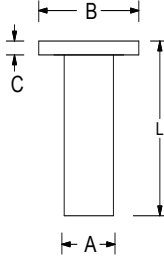
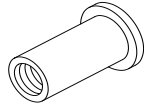
RUBBER-NUT THREADED INSERTS



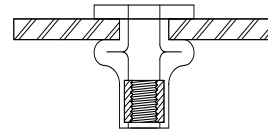
WELL-NUTS® are a flanged rubber bushing with a brass machine nut molded into one end.

When seated in the work piece, a conventional machine screw is threaded through the head of the Well-Nut® into the brass nut and tightened. This causes the insert to expand, making a secure fastening.

- Removable
- Muffles noise
- Fastens in blind holes
- Easy one-step installation
- Dampens vibration and shock
- Helps prevent galvanic corrosion
- Helps seal out ambient moisture
- No installation tool required



SNAP-IN DESIGN



INSTALLED IN SHEET

H - WORK HOLE DIA.

G - GRIP RANGE

THREAD SIZE	PART NUMBER	POP®	BODY DIAMETER "A"	WORK HOLE DIAMETER "H"	GRIP RANGE "G"	LENGTH OVER ALL "L"	HEAD DIAMETER "B"	HEAD HEIGHT "C"	TEST RESULTS (See Note)		
									TEST PLATE THICKNESS	TIGHTENING TORQUE (in.-lbs.)	ULTIMATE TENSILE (lbs.)
6-32	RN-0632-1	C632	.240	.250	.375-.607	.981	.554	.035	.500	3	115
	RN-0632-2	E632	.312	.312	.015-.156	.499	.452	.062	.062	4	114
8-32	RN-0832-1	B832	.312	.312	.015-.156	.499	.438	.052	.062	3	146
	RN-0832-2	C832**	.312	.312	.015-.172	.560	.750	.060	.063	3	130
	RN-0832-3	2D832**	.310	.312	.015-.050	.430	.500	.050	.031	5	91
10-24	RN-1024-1	A1024**	.375	.375	.015-.050	.562	.562	.125	.031	5	156
	RN-1024-2	L1024**	.375	.375	.030-.227	.767	.562	.187	.125	5	95
10-32	RN-1032-1	10S	.375	.375	.015-.192	.554	.500	.036	.125	5	230
	RN-1032-2	10SL	.375	.375	.312-.643	1.051	.562	.051	.500	3	315
	RN-1032-3	10XL**	.375	.375	.812-1.143	1.551	.562	.051	1.050	10	371
	RN-1032-4	G1032	.375	.375	.030-.227	.807	.750	.187	.125	5	277
	RN-1032-5	H1032	.375	.375	.312-.450	.847	.554	.035	.375	3	260
	RN-1032-6	J1032	.375	.375	.030-.227	.700	.750	.080	.125	5	225
	RN-1032-7	NP1032*	.375	.375	.015-.050	.400	.510	.059	.050	5	230
	RN-1032-8	N1032**	.375	.375	.015-.050	.431	.625	.051	.050	5	150
	RN-1032-9	Q1032	.375	.375	.035-.232	.665	.562	.040	.125	5	265
1/4-20	RN-2520-01	HSCM6X1**	.492	.500	.015-.094	.630	.580	.060	.075	10	225
	RN-2520-02	EM6X1**	.492	.500	.015-.094	.630	.679	.051	.031	14	120
	RN-2520-03	ACM6X1**	.492	.500	.015-.062	.630	.787	.051	.062	10	294
	RN-2525-04	1/4A**	.500	.500	.015-.050	.629	.629	.111	.075	10	290
	RN-2520-05	1/4S	.500	.500	.015-.111	.630	.630	.051	.075	10	230
	RN-2520-06	D1420	.500	.500	.031-.187	.829	.750	.187	.187	15	280
	RN-2520-07	J1420	.500	.500	.250-.457	1.051	.635	.051	.250	10	445
	RN-2520-08	JM1420**	.500	.500	.215-.422	1.440	.635	.440	.250	20	140
	RN-2520-09	M6X1**	.500	.500	.015-.094	.630	.787	.051	.075	10	223
	RN-2520-10	MDM6X1**	.500	.500	.031-.187	.829	.740	.187	.187	15	310
	RN-2520-11	MDLM6X1**	.500	.500	.031-.187	.829	.945	.187	.187	15	310
	RN-2025-12	W1420	.500	.500	.187-.343	.801	.635	.051	.187	10	360
	RN-2025-13	AC1420**	.562	.562	.280-.500	1.301	.635	.051	.397	20	251
5/16-18	RN-3118-1	ET51618**	.618	.625	.015-.118	1.102	.874	.334	.125	8	386
	RN-3118-2	E51618	.620	.625	.015-.156	.725	.875	.125	.151	25	457
	RN-3118-3	F51618**	.620	.625	.156-.375	1.100	.875	.225	.375	15	558
	RN-3118-4	A51618**	.748	.750	.015-.237	1.063	1.260	.197	.187	20	441
3/8-16	RN-3716-1	A3816	.750	.750	.015-.437	1.062	1.250	.187	.437	20	1500
	RN-3716-2	Z3816**	.750	.750	.015-.125	1.050	1.730	.350	.125	30	1125

* Has the Snap-in-Design.

** May be subject to minimum production run and lead time, please call for availability.

NOTE: Values for tightening torques and ultimate tensile strengths are a guide only and may vary greatly depending upon the application.

360900
WELL-NUT® & JACK NUT®
R&D KIT

Includes 6 Well-Nut and 6 Jack-Nut styles which are representative of the capabilities of these product lines.



WNK-200N
MARINE WELL-NUT® KIT

Contains an assortment of Well-Nut Threaded Inserts for numerous marine applications. They are designed to seal out ambient moisture, muffle noise, and dampen vibration.

