



# HANSON RIVET

& SUPPLY CO.  
13241 Weidner Street  
Pacoima, CA 91331

See page C69 for installation tools

Phone: 818-485-0500

FAX: 818-485-0540

Outside CA: 1-800-RRRIVET

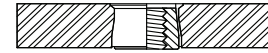
www.hansonrivet.com



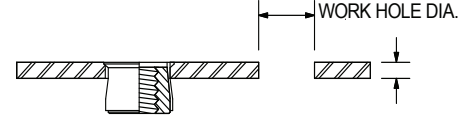
## FLUSH STYLE THREADED INSERTS



Hanson's Flush-Nuts are a versatile Threaded Insert that can be installed in any thickness of material over .030". Metal, plastic, fiberglass, or any rigid material will accept Flush-Nuts. During installation the base is drawn up into the upper sleeve swelling it in the work piece. After installation the head is virtually flush with the work.

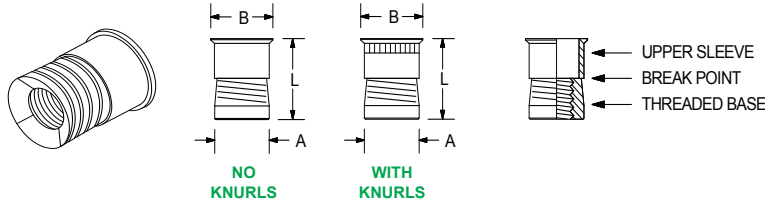


FLUSH-NUT SET IN THICK MATERIAL



FLUSH-NUT SET IN THIN MATERIAL

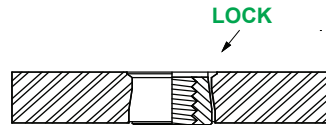
WORK HOLE DIA.  
MATERIAL THICKNESS



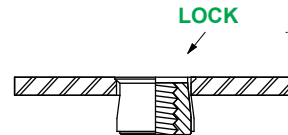
### FLUSH-NUT

THREAD SIZE	STEEL		ALUMINUM		BODY DIAMETER (MAX) "A"	FLANGE DIAMETER "B"	LENGTH "L"	WORK HOLE DIAMETER FOR MATERIAL THICKNESS:			
	NO KNURLS	WITH KNURLS	NO KNURLS	WITH KNURLS				.030-.090	.091-.124	.125-.186	OVER .186
4-40	TS440	TSK440	TA440	TAK440	.188	.211	.370	.188	.194	.194	.196
6/32	TS632	TSK632	TA632	TAK632	.219	.240	.370	.219	.221	.228	.228
8-32	TS832	TSK832	TA832	TAK832	.250	.269	.370	.250	.257	.266	.266
10-32	TS1032	TSK1032	TA1032	TAK1032	.281	.306	.370	.281	.290	.290	.297
10-24	TS1024	TSK1024	TA1024	TAK1024	.281	.306	.370	.281	.290	.290	.297
1/4-20	TS2520	TSK2520	TA2520	TAK2520	.375	.400	.515	.375	.375	.386	.391
1/4-28	TS2528	TSK2528	TA2528	TAK2528	.375	.400	.515	.750	.375	.386	.391
5/16-18	TS51618	TSK51618	TA51618	TAK51618	.500	.528	.615	.500	.500	.516	.516
3/8-16	TS3816	TSK3816	TA3816	TAK3816	.562	.588	.745	.562	.563	.578	.578
1/2-13	TS5013	TSK5013	TA5013	TAK5013	.749	.800	.935	.750	.766	.781	.797
3.5MM	TSM3.5	TSKM3.5	TAM3.5	TAKM3.5	.188	.211	.370	.187	.193	.193	.196
4MM	TSM4	TSKM4	TAM4	TAKM4	.250	.269	.370	.250	.256	.265	.265
5MM	TSM5	TSKM5	TAM5	TAKM5	.280	.306	.370	.281	.290	.291	.297
6MM	TSM6	TSKM6	TAM6	TAKM6	.375	.400	.515	.375	.375	.386	.390
8MM	TSM8	TSKM8	TAM8	TAKM8	.500	.528	.615	.500	.500	.515	.515
10MM	TSM10	TSKM10	TAM10	TAKM10	.561	.588	.745	.562	.562	.578	.578
12MM	TSM12	TSKM12	TAM12	TAKM12	.749	.800	.935	.750	.765	.781	.797

Superserts® work the same as Flush-Nuts except they have a mechanical locking mechanism for greater push and pull out strength. They require a special nose piece on the tool to lock them into the work.



SUPERSERT SET IN THICK MATERIAL

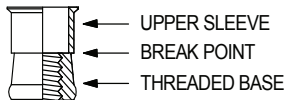
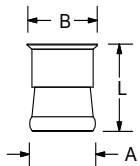


SUPERSERT SET IN THIN MATERIAL

WORK HOLE DIA.  
MATERIAL THICKNESS

STEEL  
YELLOW ZINC  
FINISH

### SUPERSERT®



THREAD SIZE	PART NUMBER	BODY DIAMETER (MAX.) "A"	BODY LENGTH (MAX.) "B"	WORK HOLE DIAMETER FOR MATERIAL THICKNESS:				
				.031-.063	.063-.090	.091-.126	.126-.156	OVER .156
8-32	0FB08-00814	.250	.455	.250	.250	.252	.256	.260
10-32	0FB07-01014	.281	.455	.281	.287	.291	.295	.295
1/4-20	0FB04-00816	.375	.525	.375	.378	.382	.386	.386
3MM	0FB08-00313	.187	.415	.187	.187	.189	.193	.193
4MM	0FB08-00414	.249	.455	.250	.250	.252	.256	.260
5MM	0FB08-00514	.280	.455	.281	.288	.291	.295	.295
6MM	0FB08-00616	.375	.525	.375	.378	.382	.386	.386
8MM	0FB08-00820	.499	.625	.500	.500	.504	.508	.512