



HANSON RIVET

& SUPPLY CO.
13241 Weidner Street
Pacoima, CA 91331

See pages C43-C46 for
installation tools

Phone: 818-485-0500

FAX: 818-485-0540

Outside CA: 1-800-RRRIVET

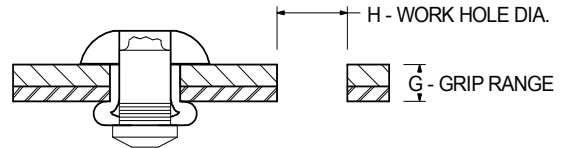
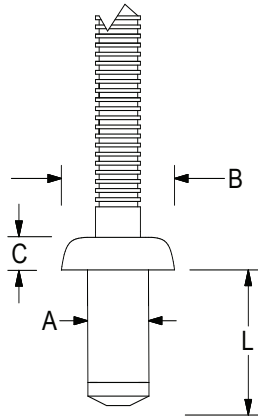
www.hansonrivet.com



HIGH STRENGTH BLIND RIVETS



HR RIVETS® offer high strength with a large blind-side footprint for use in thin sheet or brittle material applications. High clamp-up and excellent mandrel retention ensures a vibration resistant joint.



HR RIVETS

A SPECIAL NOSEPIECE AND JAW PUSHER IS REQUIRED FOR INSTALLATION OF THESE RIVETS

RIVET MATERIAL MANDREL MATERIAL	HEAD STYLE	PART NUMBER	BODY DIAMETER "A"	WORK HOLE AND DRILL SIZE "H"	GRIP RANGE "G"	BODY LENGTH (MAX.) "L"	HEAD DIAMETER "B"	HEAD HEIGHT "C"	TYPICAL ULTIMATE STRENGTHS IN LBS. (SEE NOTE)	
									SHEAR	TENSILE
<p>STEEL MANDREL</p> <p>STEEL RIVET</p>	DOME HEAD	SD42HR SD43HR SD44HR	.124/.132	.133/.141	.036-.125 .125-.187 .187-.250	.315 .378 .440	.240/.263	.039/.051	325	382
		SD52HR SD53HR SD54HR	.155/.164	.165/.173	.063-.125 .125-.187 .187-.250	.354 .417 .480	.303/.326	.055/.066	449	584
		SD62HR SD63HR SD64HR SD65HR	.187/.195	.196/.212	.063-.125 .125-.187 .187-.250 .250-.312	.362 .425 .488 .551	.362/.396	.066/.082	696	764
		SD83HR SD85HR	.250/.259	.250/.258	.047-.187 .187-.312	.444 .570	.492/.531	.090/.106	876	1202
	LARGE FLANGE	SD62HRLF SD63HRLF SD64HRLF SD65HRLF	.187/.195	.196/.212	.063-.125 .125-.187 .187-.250 .250-.312	.362 .425 .488 .551	.606/.645	.070/.086	696	764
		SD83HRLF SD85HRLF	.250/.259	.250/.258	.047-.187 .187-.312	.444 .570	.610/.649	.110/.126	876	1202
	120° COUNTERSUNK	SK42HR SK43HR SK44HR	.124/.132	.133/.138	.078-.125 .125-.187 .187-.250	.315 .378 .440	.196/.220	.023/.039	213	269
		SH52HR SK54HR SK56HR	.155/.164	.165/.169	.078-.125 .125-.187 .187-.250	.354 .417 .480	.240/.263	.031/.047	292	449
		SK63HR SK64HR	.187/.195	.196/.205	.093-.187 .187-.250	.425 .488	.307/.338	.043/.059	696	764
		SSD42SSHR SSD43SSHR SSD44SSHR	.124/.132	.134/.142	.063-.126 .126-.189 .189-.252	.315 .378 .441	.240/.264	.039/.051	427	562
	DOME HEAD	SSD52SSHR SSD53SSHR SSD54SSHR	.155/.164	.165/.173	.063-.126 .126-.189 .189-.252	.354 .417 .480	.303/.327	.055/.066	630	855
		SSD62SSHR SSD63SSHR SSD64SSHR	.187/.195	.196/.212	.063-.125 .125-.187 .187-.250	.362 .425 .488	.362/.396	.066/.082	1056	1124
120° COUNTERSUNK	SSK42SSHR SSK43SSHR SSK44SSHR	.124/.132	.134/.142	.079-.125 .126-.189 .189-.252	.441 .504 .567	.196/.200	.023/.039	315	450	
	SSK63SSHR SSK64SSHR	.187/.195	.196/.205	.094-.187 .187-.250	.425 .488	.307/.388	.043/.059	831	1124	



HANSON RIVET

& SUPPLY CO.
13241 Weidner Street
Pacoima, CA 91331

See pages C43-C46 for
installation tools

Phone: 818-485-0500

FAX: 818-485-0540

Outside CA: 1-800-RRRIVET

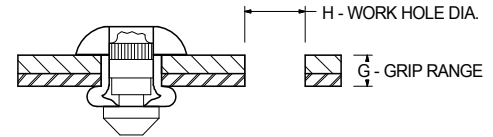
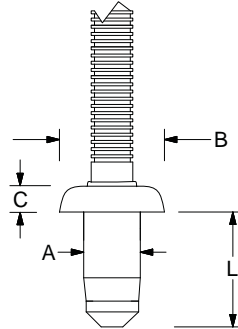
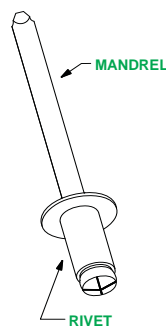
www.hansonrivet.com



HIGH STRENGTH BLIND RIVETS



Hemlok® Rivets offer high strength with a large blind-side footprint for use in thin sheet or brittle material applications. The mandrel has a mechanical lock and breaks close to flush with the rivet head.



Both Avibulb® and Avinox II® Rivets offer high strength with a large blind-side footprint for use in thin sheet or brittle material applications. High clamp-up and positive mandrel retention ensures a vibration resistant joint.

HEMLOK® STRUCTURAL RIVETS

RIVET MATERIAL MANDREL MATERIAL	HEAD STYLE	PART NUMBER	BODY DIAMETER "A"	WORK HOLE DIAMETER "H"	GRIP RANGE "G"	BODY LENGTH (MAX.) "L"	HEAD DIAMETER (NOM.) "B"	HEAD HEIGHT (MAX.) "C"	TYPICAL ULTIMATE STRENGTHS IN LBS. (SEE NOTE)	
									SHEAR	TENSILE
STEEL RIVET STEEL MANDREL	PROTRUDING HEAD	2221-0812	.254/.258	.264/.272	.068-.138	.488-.539	.515	.105	3820	2090
		2221-0813			.110-.189	.539-.590				
		2221-0814			.132-.211	.561-.612				
		2221-0815			.189-.268	.618-.669				
		2221-0817			.268-.346	.696-.747				
		2221-0818			.295-.374	.724-.775				
		2221-0819			.346-.425	.775-.826				
2221-0821	.425-.504	.854-.905								
ALUMINUM RIVET ALUMINUM MANDREL	PROTRUDING HEAD	2241-0812	.254/.258	.264/.272	.068-.138	.488-.539	.515	.105	1500	700
		2241-0813			.110-.189	.539-.590				
		2241-0814			.132-.211	.561-.612				
		2241-0815			.189-.268	.618-.669				
		2241-0817			.268-.346	.696-.747				
		2241-0818			.295-.374	.724-.775				
		2241-0819			.346-.425	.775-.826				
2241-0821	.425-.504	.854-.905								

AVIBULB® RIVETS

RIVET MATERIAL MANDREL MATERIAL	HEAD STYLE	PART NUMBER	BODY DIAMETER "A"	WORK HOLE DIAMETER "H"	GRIP RANGE "G"	BODY LENGTH (MAX.) "L"	HEAD DIAMETER (NOM.) "B"	HEAD HEIGHT (MAX.) "C"	TYPICAL ULTIMATE STRENGTHS IN LBS. (SEE NOTE)		
									SHEAR		TENSILE
				STEM INSIDE SHEAR PLANE	STEM OUTSIDE SHEAR PLANE						
STEEL RIVET STEEL MANDREL	LO-PROFILE HEAD	OBN01-0408	.122/.130	.130/.134	.039-.118	.343	.248	.055	270	N/A	310
		OBN01-0411			.118-.197	.445			393		
		OBN01-0414			.197-.276	.535			562		
		OBN01-0509	.153/.160	.161/.169	.039-.118	.400	.303	.059	539	416	629
		OBN01-0512			.118-.197	.480			787		
		OBN01-0516			.197-.276	.600			921		
		OBN01-00611	.185/.192	.193/.201	.059-.138	.480	.366	.059	809	742	854
		OBN01-00614			.138-.236	.580			944		
		OBN01-00618			.236-.335	.700			1258		

AVINOX II® RIVETS

RIVET MATERIAL MANDREL MATERIAL	HEAD STYLE	PART NUMBER	BODY DIAMETER "A"	WORK HOLE DIAMETER "H"	GRIP RANGE "G"	BODY LENGTH (MAX.) "L"	HEAD DIAMETER (NOM.) "B"	HEAD HEIGHT (MAX.) "C"	TYPICAL ULTIMATE STRENGTHS IN LBS. (SEE NOTE)		
									SHEAR		TENSILE
				STEM INSIDE SHEAR PLANE	STEM OUTSIDE SHEAR PLANE						
STAINLESS RIVET STAINLESS MANDREL	LO-PROFILE HEAD	OBE61-00408	.122/.130	.130/.134	.039-.118	.350	.248	.043	360	360	450
		OBE61-00411			.118-.197	.450			382		
		OBE61-00414			.197-.276	.540			719		
		OBE61-00509	.153/.160	.161/.169	.039-.118	.400	.303	.059	1169	629	899
		OBE61-00512			.118-.197	.480			1169		
		OBE61-00516			.197-.276	.600			1169		
		OBE61-00611	.183/.191	.193/.201	.059-.138	.510	.366	.059	1236	877	1124
		OBE61-00614			.138-.236	.610			1236		
		OBE61-00618			.236-.335	.730			1236		

NOTE: Values for typical ultimate strengths are a guide only and may vary greatly depending upon the application.