



# HANSON RIVET

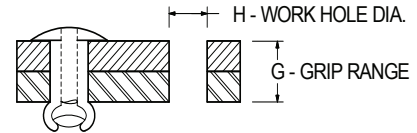
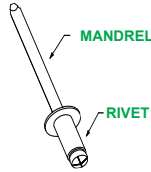
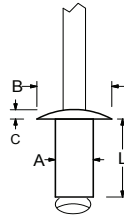
& SUPPLY CO.  
13241 Weidner Street  
Pacoima, CA 91331

See pages C43-C46 for installation tools

Phone: 818-485-0500  
FAX: 818-485-0540

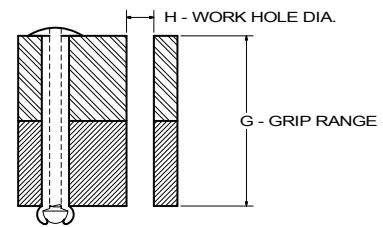
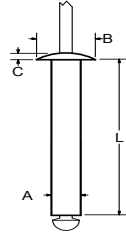
Outside CA: 1-800-RRRIVET  
www.hansonrivet.com

## BLIND RIVETS & MUSHROOM PLUGS



### MICRO RIVETS

RIVET MATERIAL MANDREL MATERIAL	HEAD STYLE	PART NUMBER	POP®	BODY DIAMETER "A"	WORK HOLE & DRILL SIZE "H"	GRIP RANGE "G"	BODY LENGTH (MAX.) "L"	HEAD DIAMETER (NOM.) "B"	HEAD HEIGHT (MAX.) "C"	TYPICAL ULTIMATE STRENGTHS IN LBS. (SEE NOTE)			
										SHEAR	TENSILE		
<b>ALUMINUM RIVET</b> <b>STEEL MANDREL</b>	<b>DOME HEAD</b>	PASD201	TAPD20M1BS	.078	.080/.084 #41	.000-.063	.161	.148	.029	66	87		
		PASD202	TAPD20M2BS									.039-.126	.224
		PASD203	TAPD20M3BS									.126-.189	.291
		PASD204	TAPD20M4BS									.189-.252	.354
		PASD205	TAPD20M5MS									.252-.315	.421

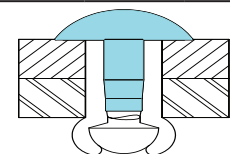
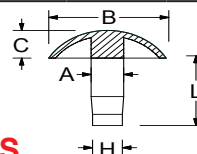
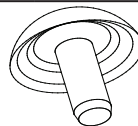


### EXTRA LONG BLIND RIVETS

RIVET MATERIAL MANDREL MATERIAL	HEAD STYLE	PART NUMBER	SIZE	BODY DIAMETER "A"	WORK HOLE & DRILL SIZE "H"	GRIP RANGE "G"	BODY LENGTH (MAX.) "L"	HEAD DIAMETER (NOM.) "B"	HEAD HEIGHT (MAX.) "C"	TYPICAL ULTIMATE STRENGTHS IN LBS. (SEE NOTE)			
										SHEAR	TENSILE		
<b>ALUMINUM RIVET</b> PLAIN FINISH 	<b>DOME HEAD</b>	PASD318	3 x 18	.118	.122/.126	.512-.590	.740	.242	.047	160	200		
		PASD320	3 x 20									.591-.670	.819
		PASD325	3 x 25									.671-.866	1.016
		PASD330	3 x 30	.867-1.024	1.214								
		PASD418	4 x 18	.157	.160/.164 #20	.490-.570	.740	.296	.059	190	225		
		PASD420	4 x 20									.571-.650	.819
		PASD425	4 x 25									.651-.845	1.016
		PASD430	4 x 30									.846-1.025	1.214
		PASD435	4 x 35	.197	.200/.204 #7	1.026-1.180	1.411	.355	.063	470	630		
		PASD440	4 x 40									1.181-1.380	1.608
		PASD535	5 x 35									.984-1.181	1.411
		PASD540	5 x 40									1.182-1.378	1.608
		PASD545	5 x 45	1.379-1.575	1.805								
		PASD550	5 x 50	1.576-1.770	2.002								
		PASD555	5 x 55	1.771-1.890	2.199								
PASD560	5 x 60	1.891-2.047	2.396										
PASD565	5 x 65	2.048-2.244	2.593										
PASD570	5 x 70	2.245-2.440	2.790										
PASD580	5 x 80	2.441-2.835	3.184										
<b>STEEL RIVET</b> <b>STEEL MANDREL</b>	<b>DOME HEAD</b>	PSSD535	5 x 35	.197	.200/.204 #7	1.00-1.187	1.411	.355	.063	765	900		
		PSSD540	5 x 40									1.188-1.375	1.608
		PSSD545	5 x 45									1.376-1.625	1.805
		PSSD550	5 x 50									1.626-1.750	2.002

NOTE: SOME SIZES MAY BE AVAILABLE IN OTHER MATERIALS INCLUDING: STEEL, 304 & 316 STAINLESS. PLEASE CALL FOR AVAILABILITY.

**Mushroom Plugs** are decorative caps that are to be pressed or driven into the hole in the head of an installed 3/16" body diameter POP® rivet. This gives the rivet a very clean look!



### MUSHROOM PLUGS

MATERIAL	HEAD STYLE	PART NUMBER	POP®	THE RIVET THE MUSHROOM PLUG IS DESIGNED TO BE USED WITH:	BODY DIAMETER "A"	TIP OF SHANK DIAMETER "H"	BODY LENGTH (MAX.) "L"	HEAD DIAMETER (NOM.) "B"	HEAD HEIGHT (MAX.) "C"
<b>ALUMINUM</b>	<b>DOME HEAD</b>	PMPA6	MPA-6	3/16" DRAWN STEEL RIVETS	.127	.116	.350	.432	.125
		PMPA6-1	MPA-6-1	3/16" EXTRUDED ALUMINUM RIVETS	.119	.108	.350	.432	.125

NOTE: Values for typical ultimate strengths are a guide only and may vary greatly depending upon the application.